



JARINGAN EPITEL

OLEH:

dr Rachmah Laksmi Ambardini

FIK UNY rachmah_la@uny.ac.id

JARINGAN EPITEL

- Melapisi permukaan tubuh
- Berperan pd homeostasis tubuh
- Tersusun rapat, tidak ada jar.ikat interselular, tdk ada pembuluh darah
- Berasal dari 3 macam lapisan: ektoderm, mesoderm, & endoderm

JARINGAN EPITEL

- Ektoderm → epidermis pd kulit
- Mesoderm → epitel pd pleura, perikardium, peritonium
- Endoderm → epitel pd saluran pencernaan

FUNGSI EPITEL

- Protektif → terhadap:kerusakan mekanik, kehilangan cairan, invasi benda asing.
- Metabolik:
 - Pertukaran metabolit → absorpsi, ekskresi, sekresi.
 - Kelenjar (endokrin & eksokrin)
 - Alat indra (epitel sensorium)

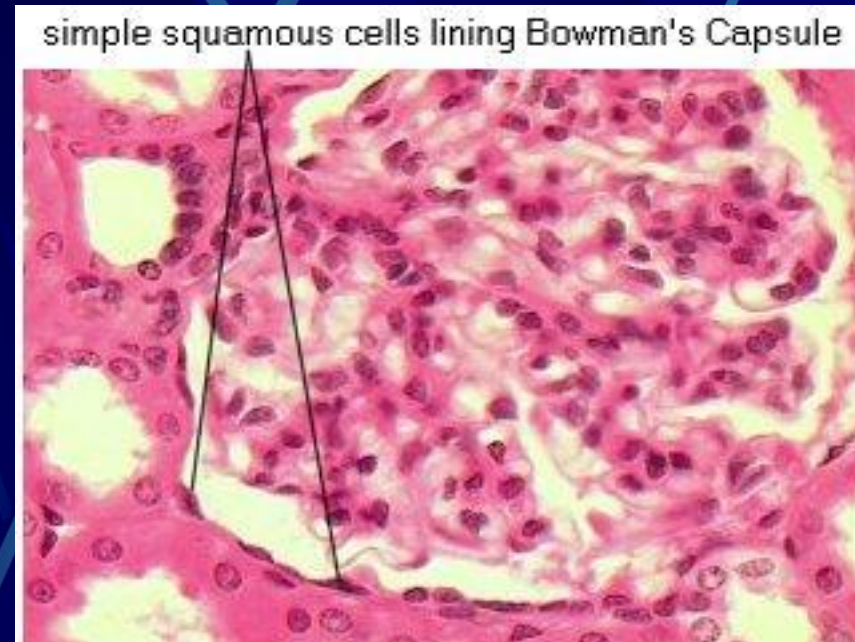
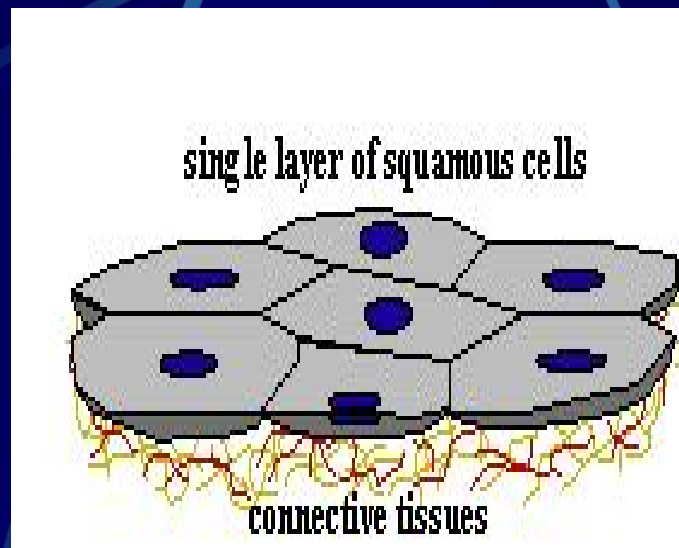
PEMBAGIAN EPITEL

EPITEL	Epitel Pelapis	SELAPIS	Squamous
			Kuboid
			Kolumnar Pseudostratifikatum Squamous
		BERLAPIS	Squamous
			Kuboid
			Kolumnar
			Transisional
KELENJAR		Eksokrin	
		Endokrin	

Bangunan khusus permukaan epitel

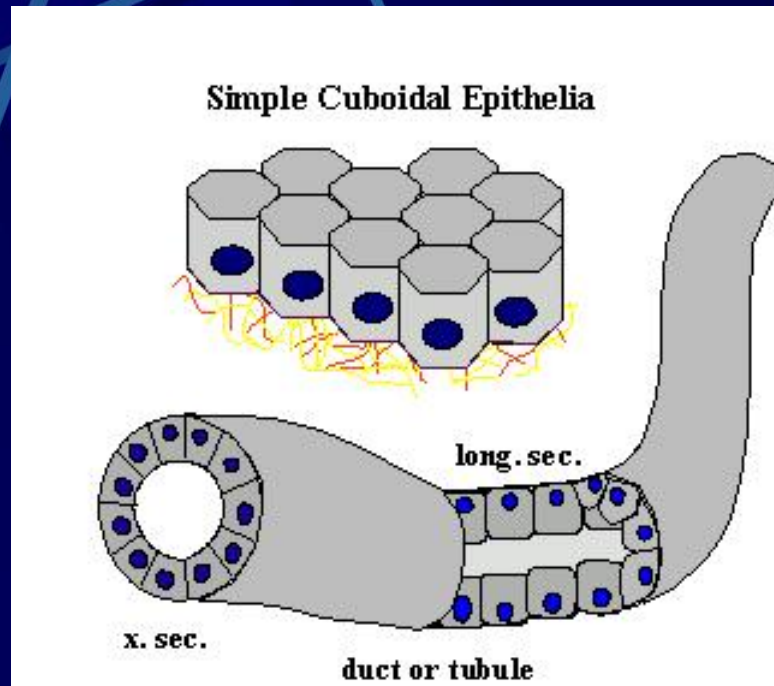
- Mikrovillus: tonjolan sitoplasma, utk memperluas permukaan → meningkatkan kapasitas absorpsi. Mis: lumen usus
- Cillium: kinetocillia (bergerak aktif) & strereocillia (tdk dpt bergerak aktif)
- Myoepitheliocytus: filamen kontraktil → memeras & mengeluarkan isi sel. Mis: pd kelenjar ludah, kelenjar payudara

EPITEL SQUAMOSUM SIMPLEKS (Epitel pipih selapis)

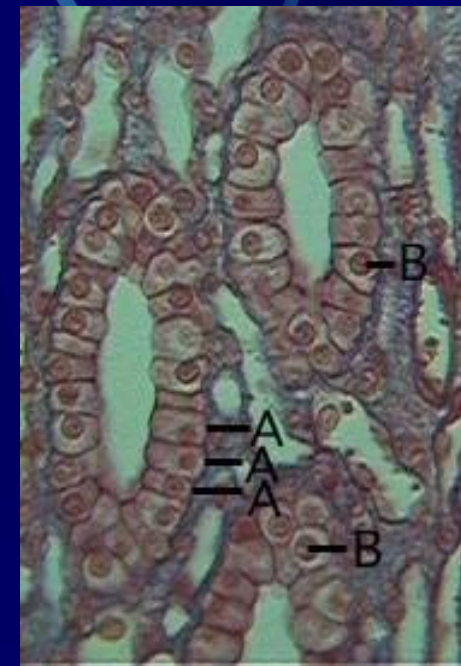


**Fungsi: pertukaran nutrien, sampah
Metabolik, & pertukaran gas →
Membantu difusi, osmose, filtrasi.
Contoh: alveoli, ginjal**

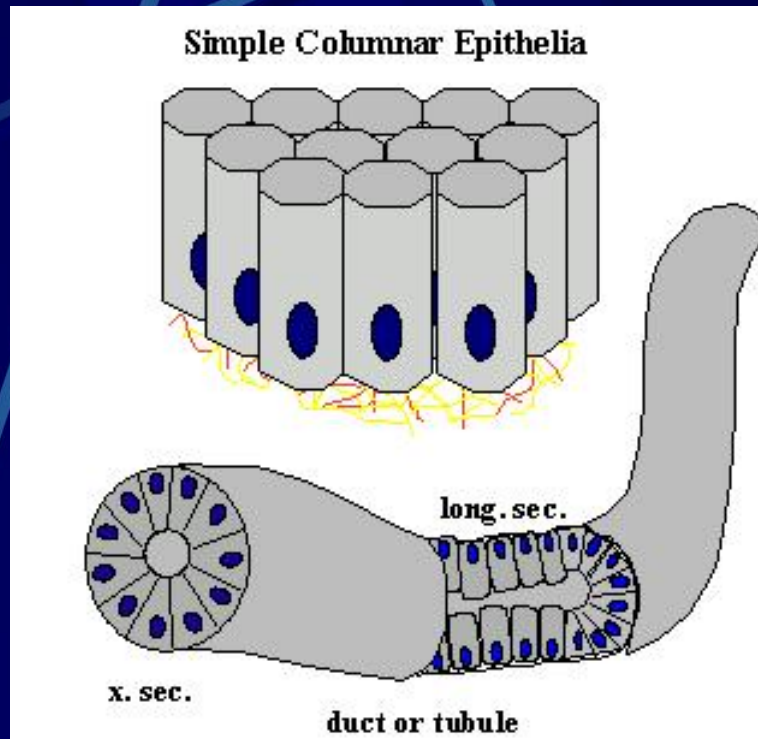
EPITEL CUBOID SIMPLEKS



Saluran kelenjar,
Tubulus ginjal

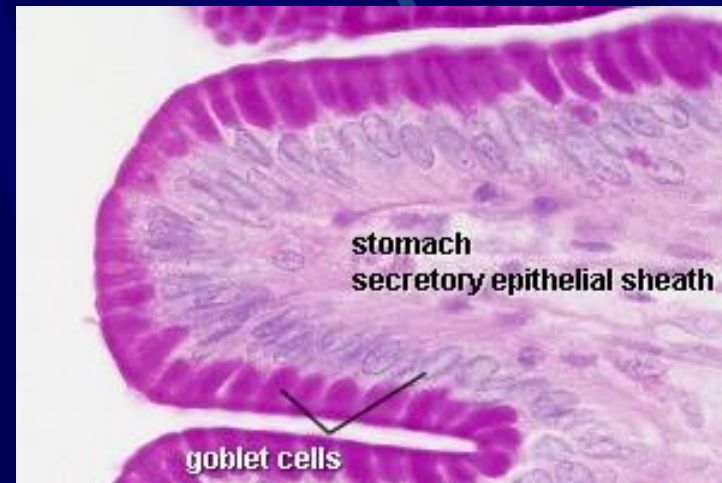


EPITEL COLUMNAR SIMPLEKS

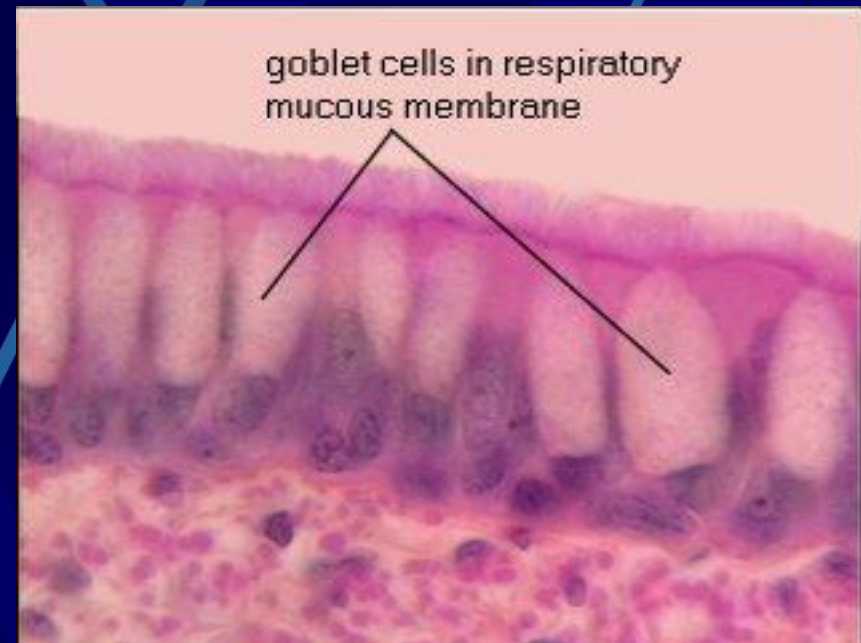
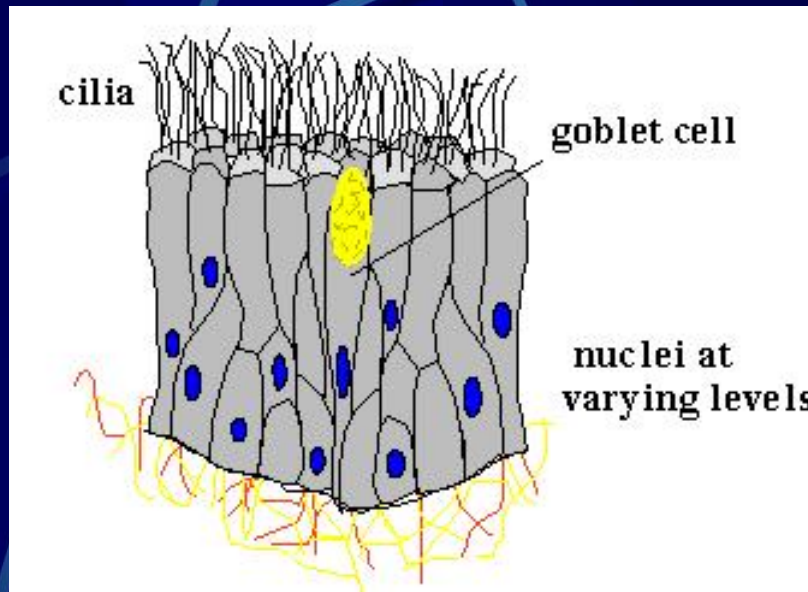


Biasanya utk fungsi absorpsi,
Sekresi.

Terdapat di: duktus kelenjar
Eksokrin, usus halus

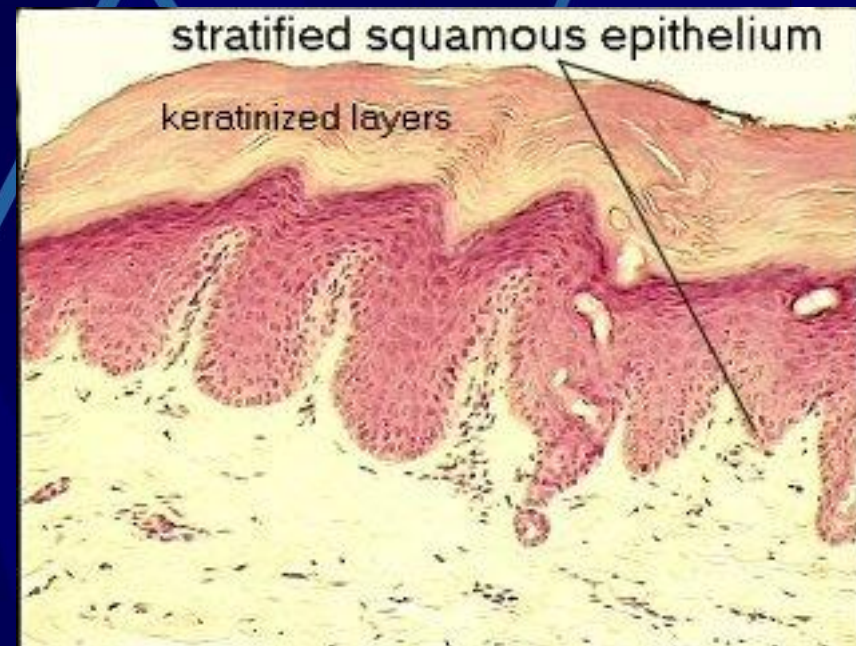
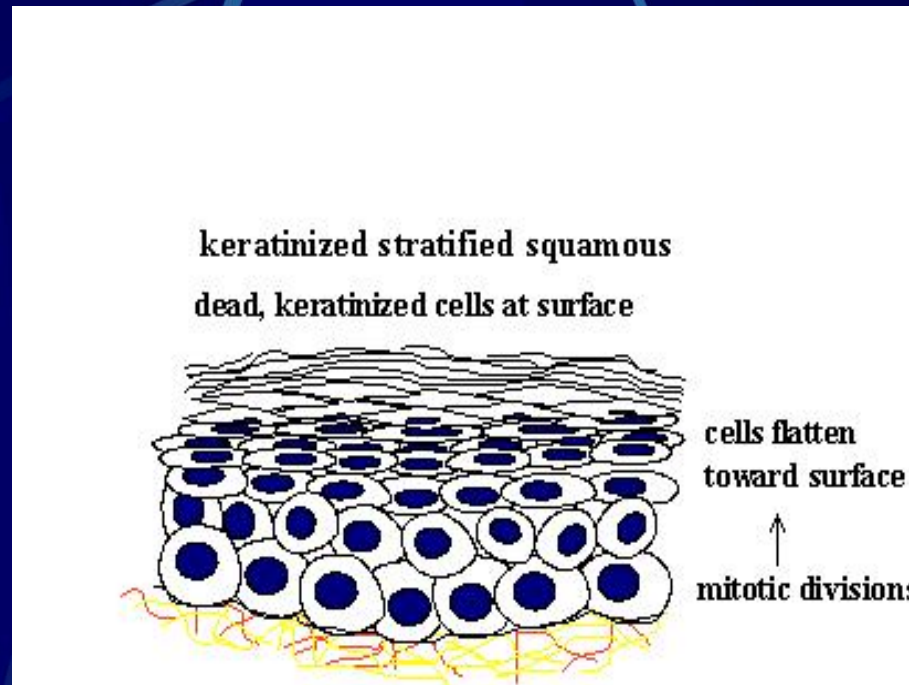


EPITEL PSEUDOSTRATIFICATUM



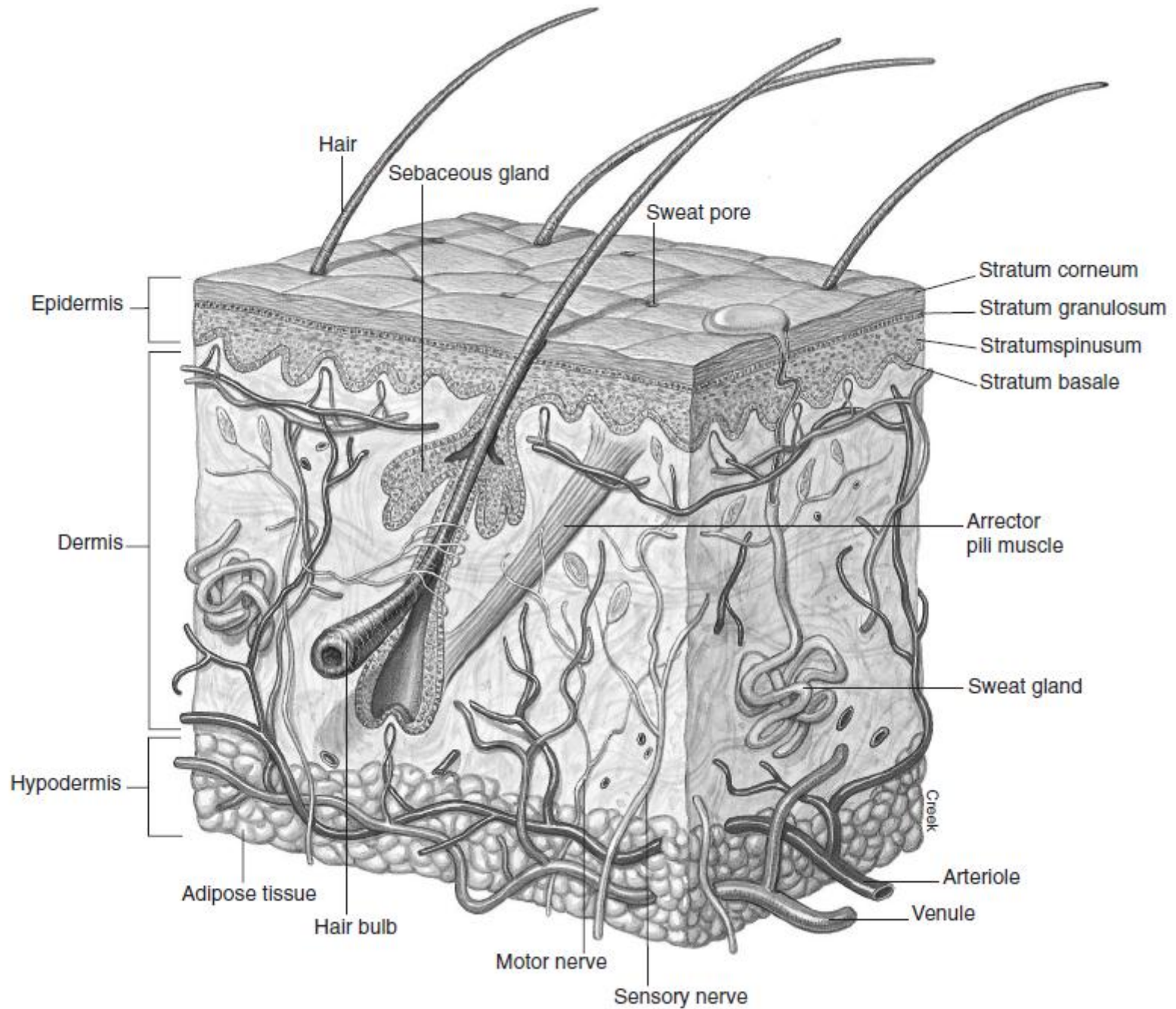
Di permukaan saluran pernafasan

EPITEL SQUAMOSUM STRATIFICATUM CORNIFICATUM

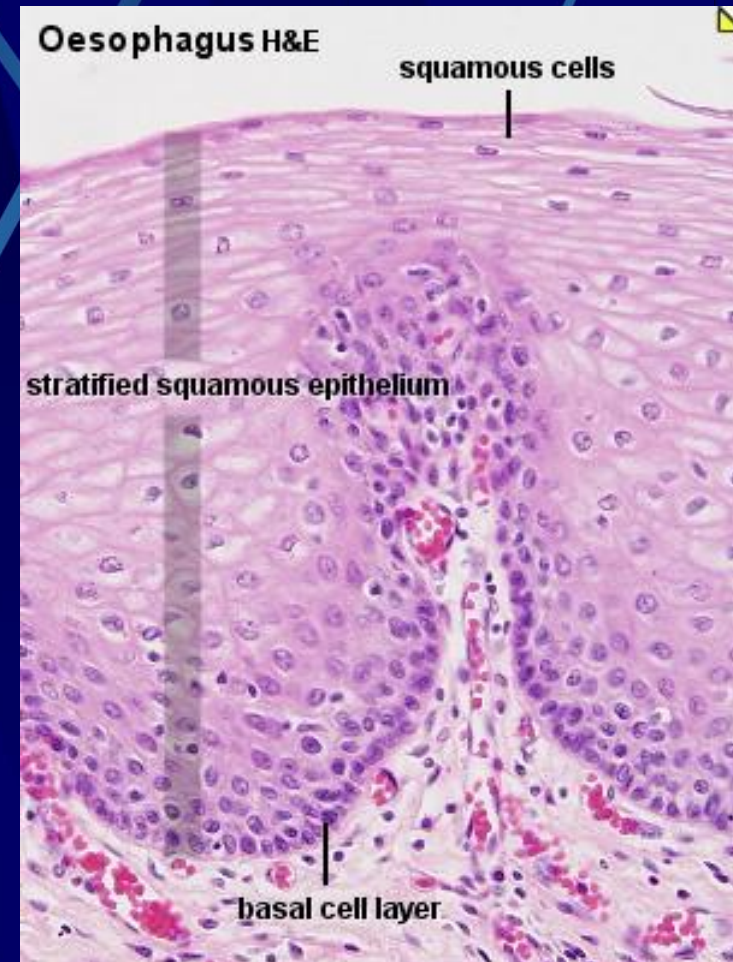
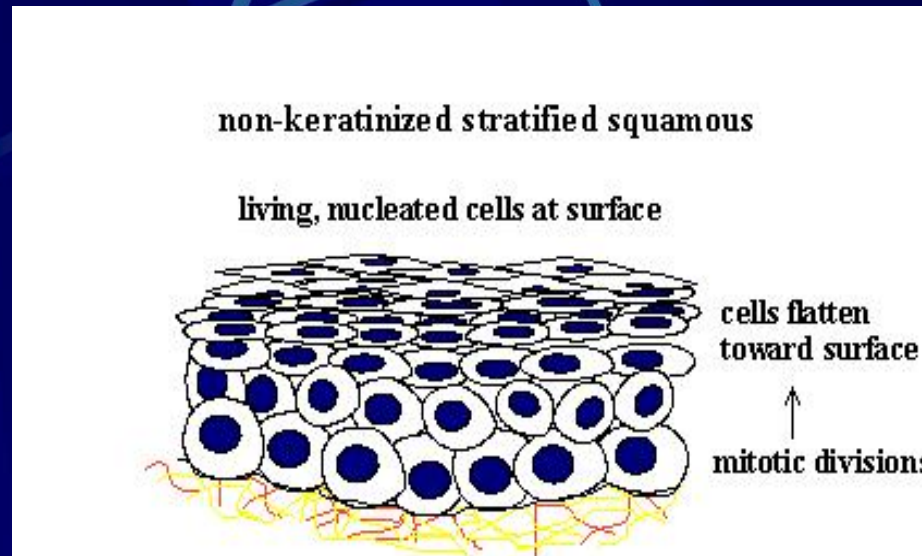


Contoh: di kulit

Melindungi terhadap gesekan, invasi bakteri



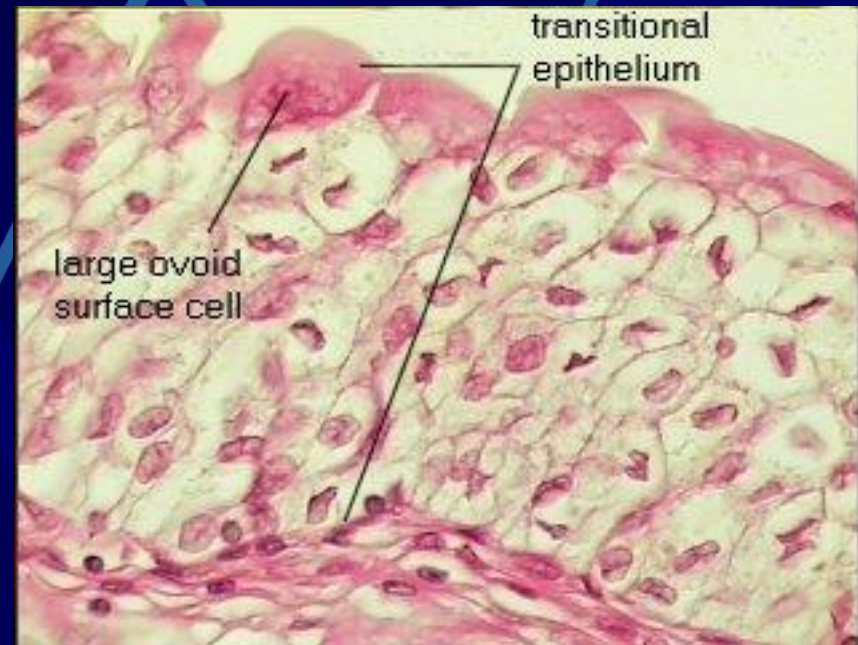
EPITEL SQUAMOSUM STRATIFICATUM NON-CORNIFICATUM



Contoh: cavum oris, esofagus

Utk proteksi, lubrikasi selama proses mengunyah & menelan

EPITEL TRANSISIONAL



Contoh: di epitel kandung kemih