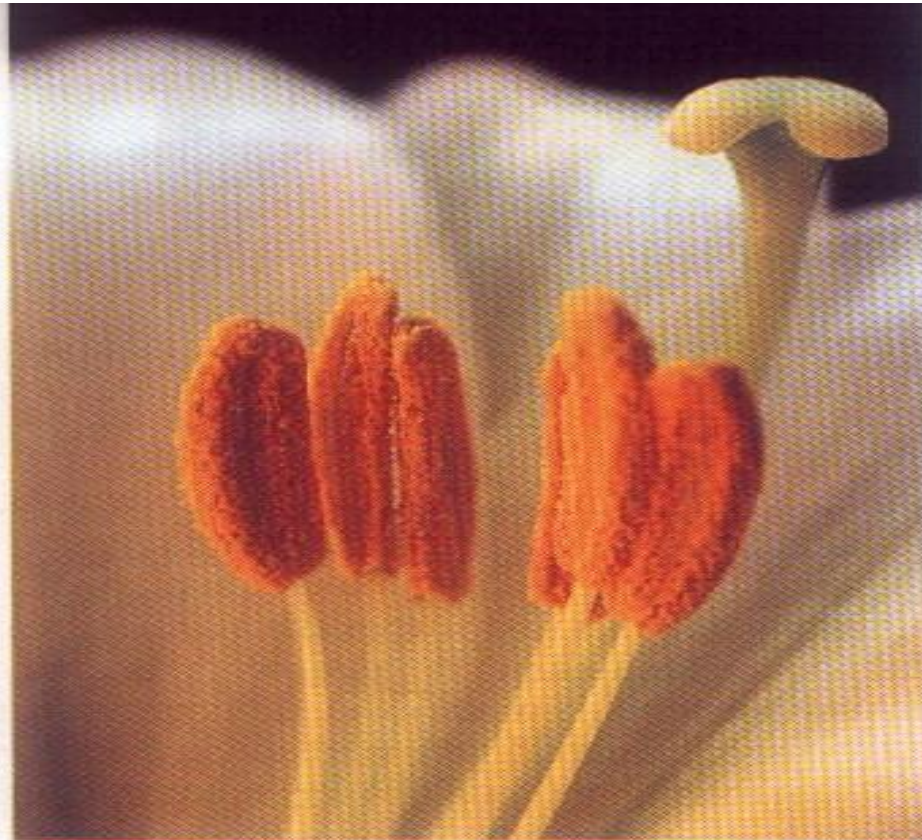
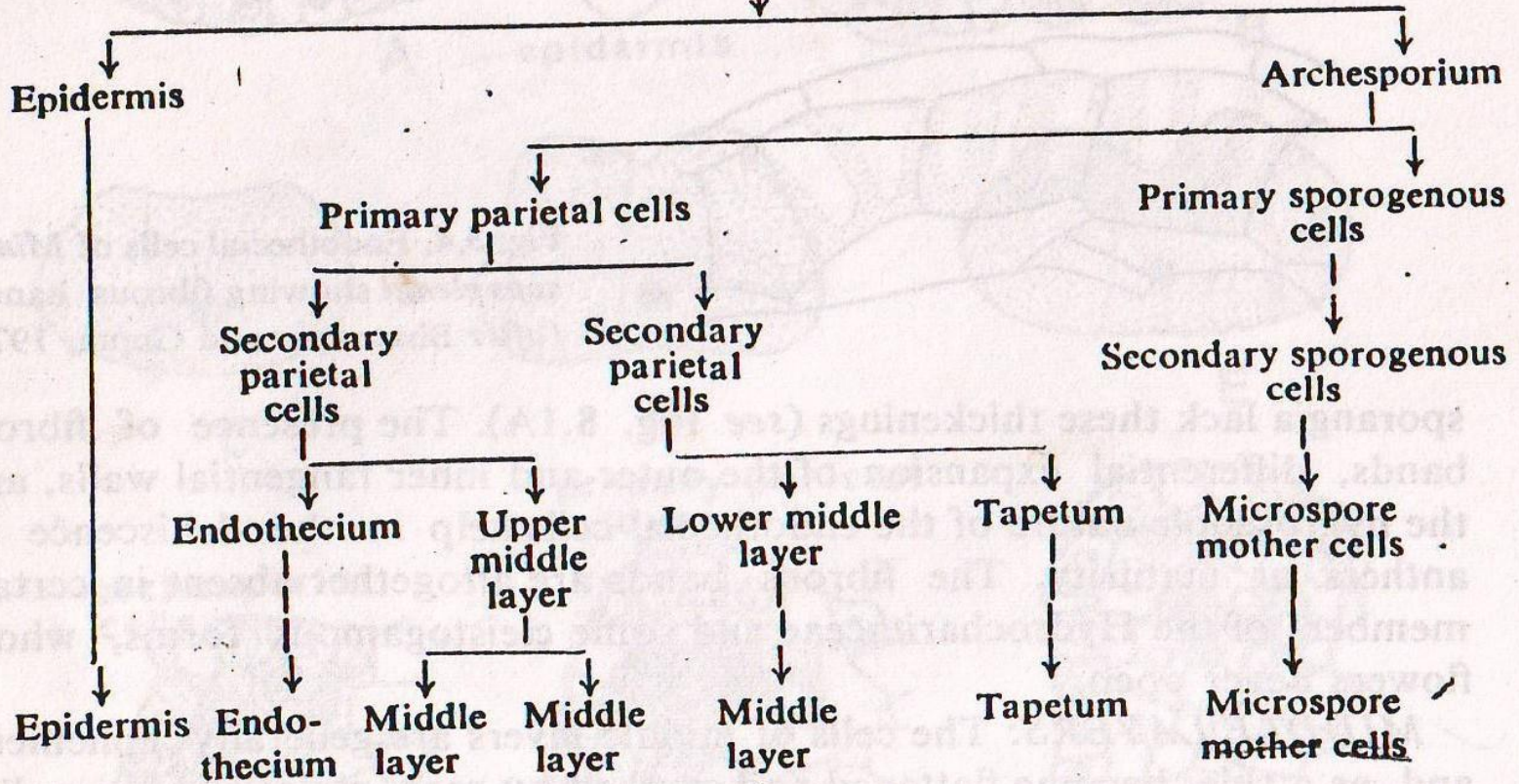


# Alat Reproduksi Jantan Angiospermae



**Undifferentiated anther**



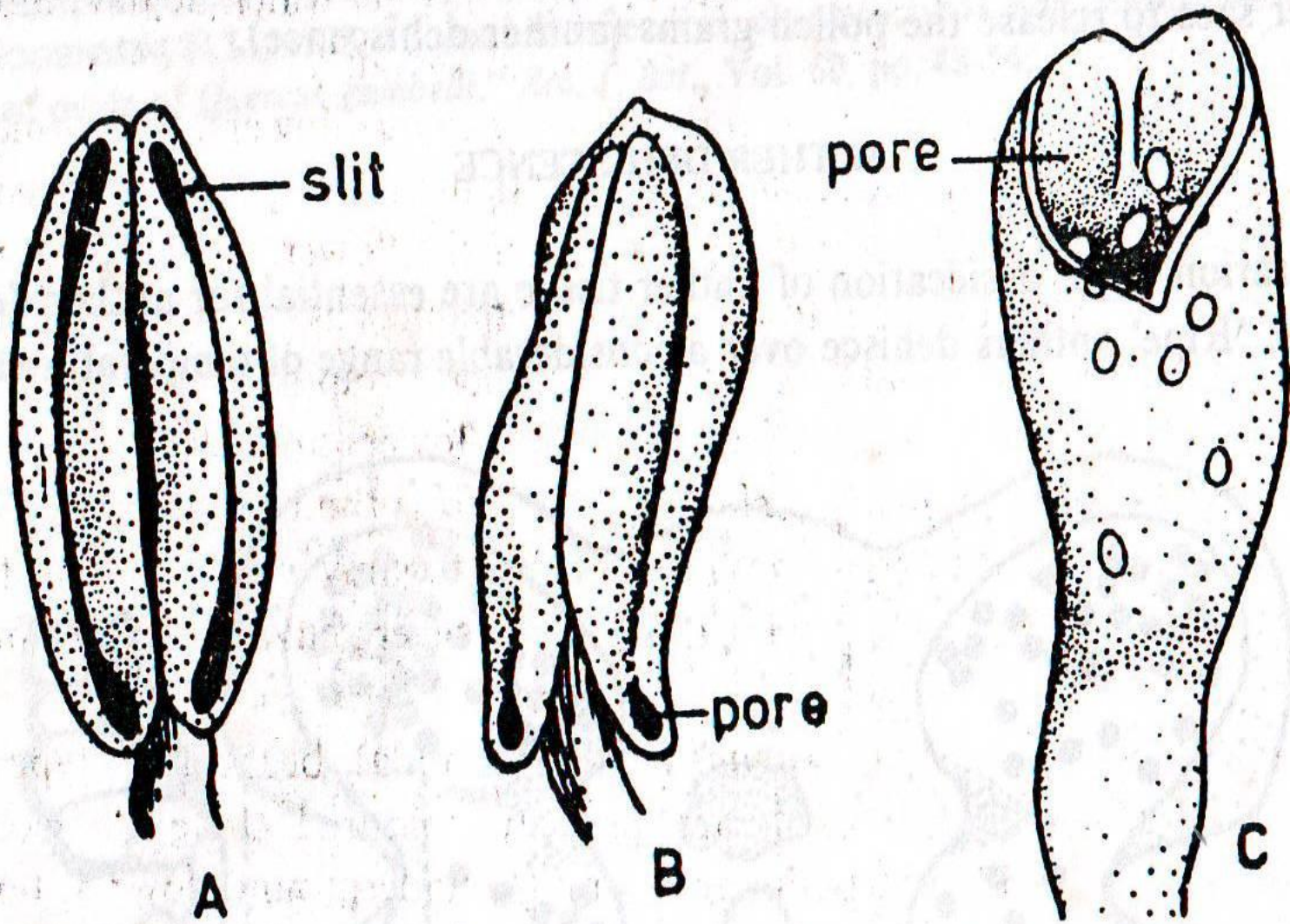
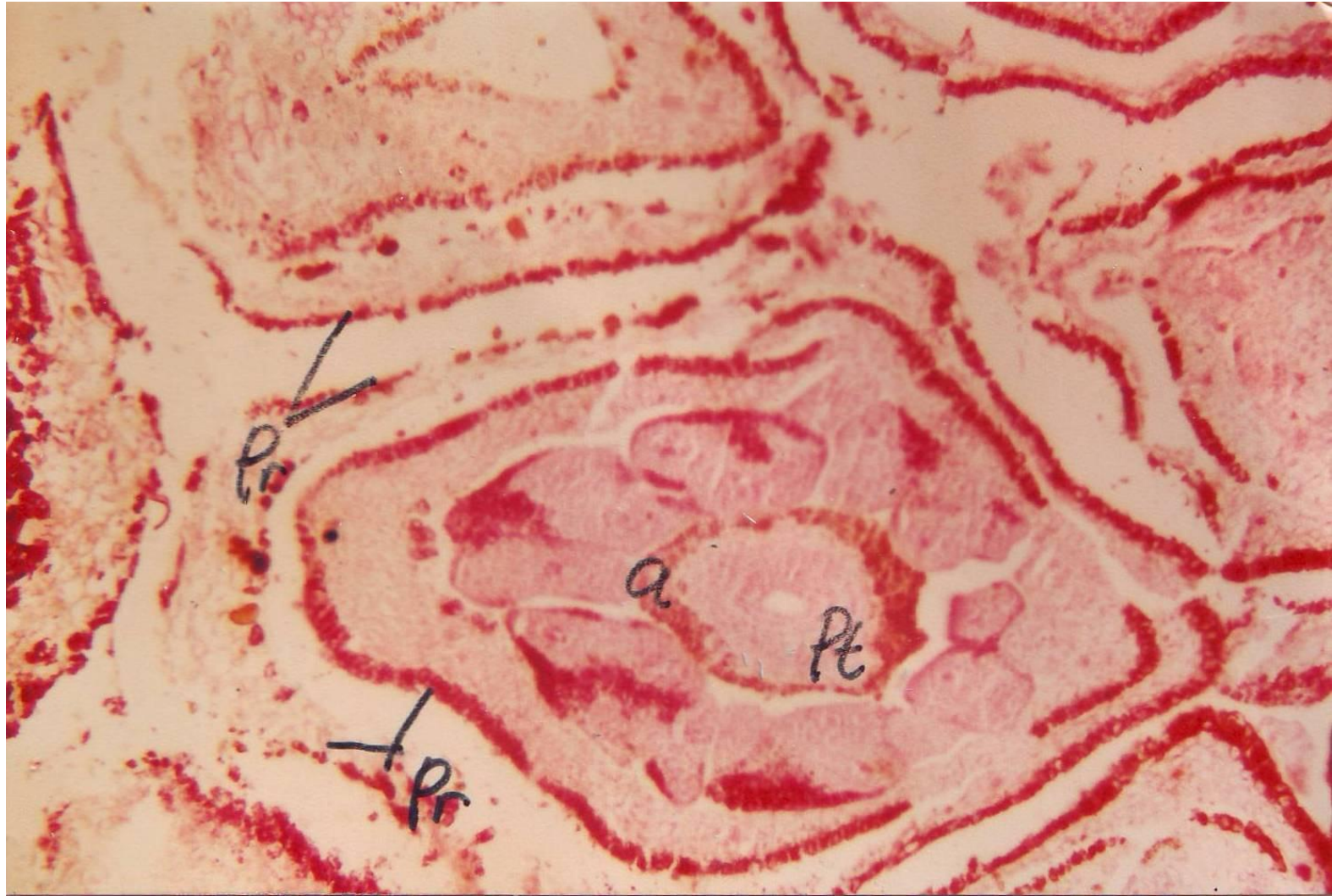
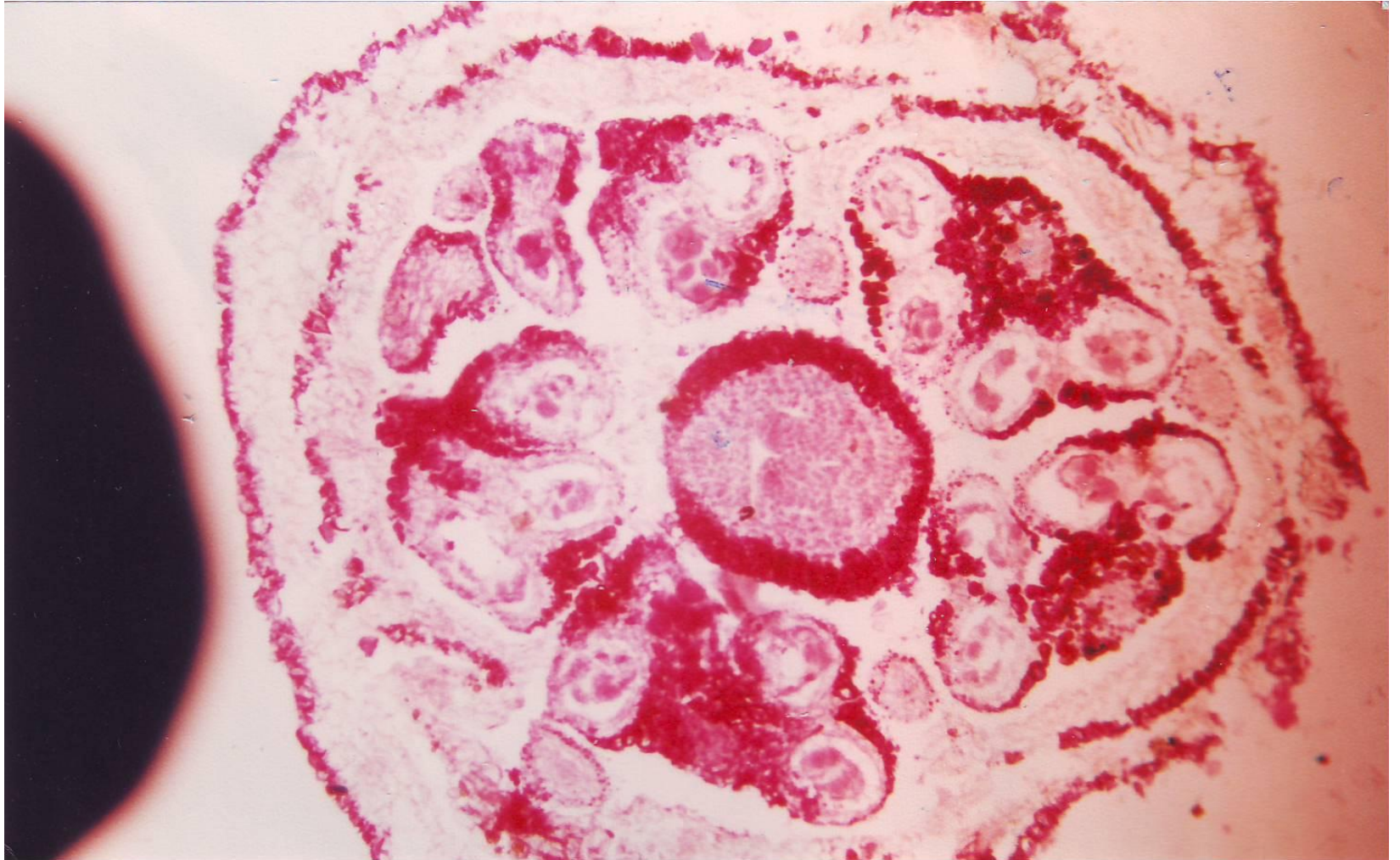
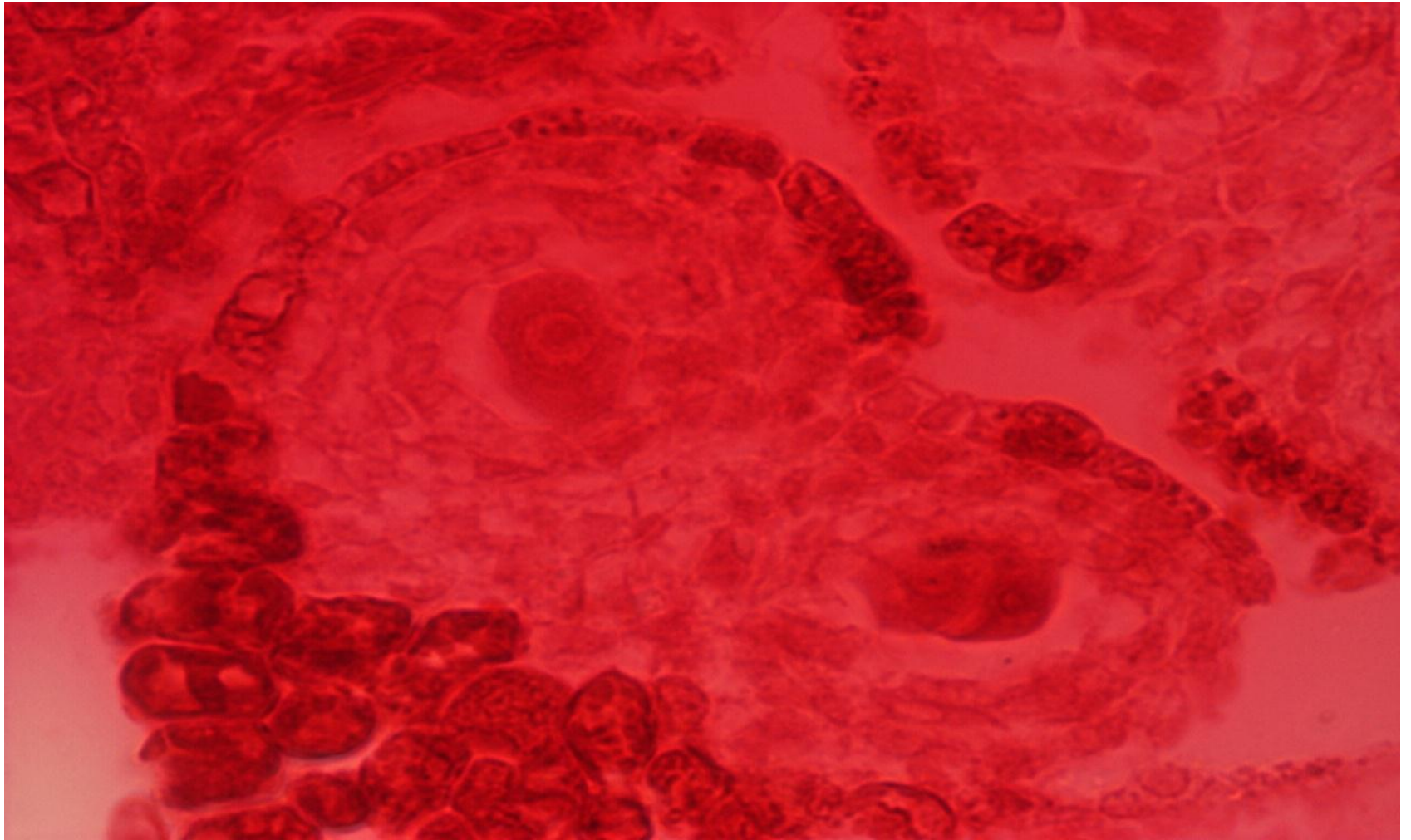


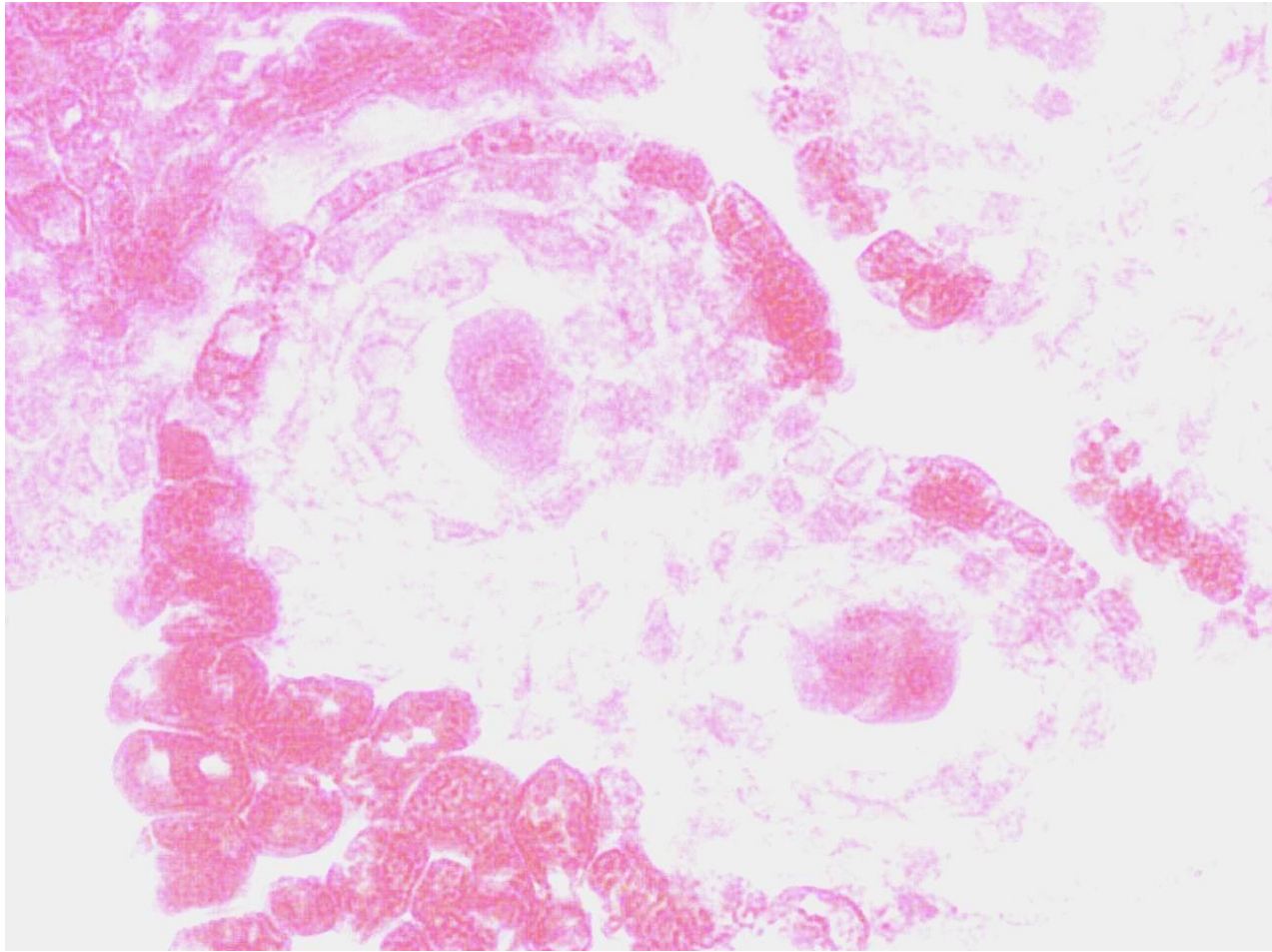
Fig. 8.2. Anther dehiscence. *A.* By slits (*Lilium*). *B.* By basal pores (*Cassia fistula*). *C.* By a single, large, terminal pore (*Polygala chinensis*).

Perkembangan Antera dan  
Serbuk Sari  
Lamtoro  
(*Leucaena glauca*)

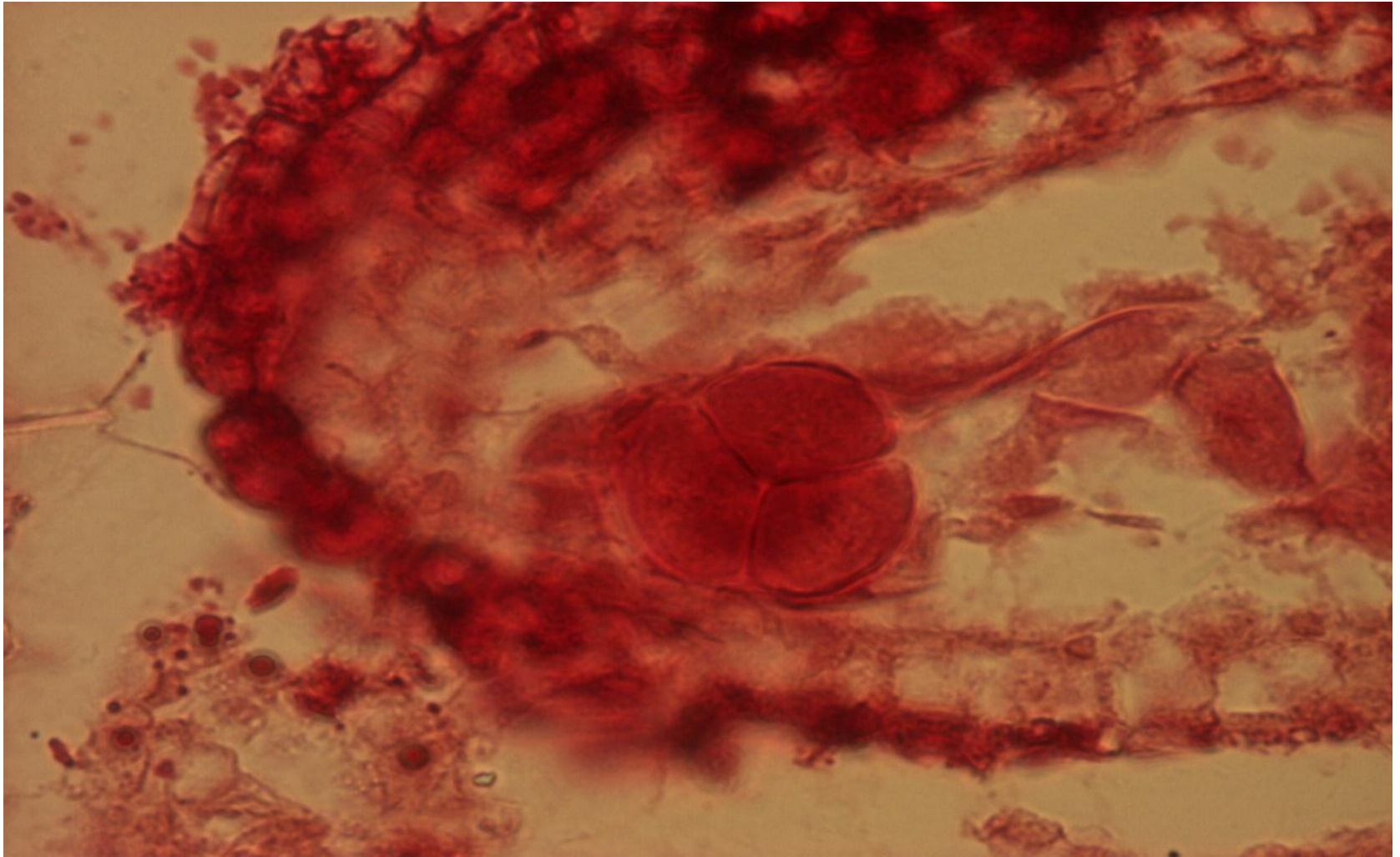


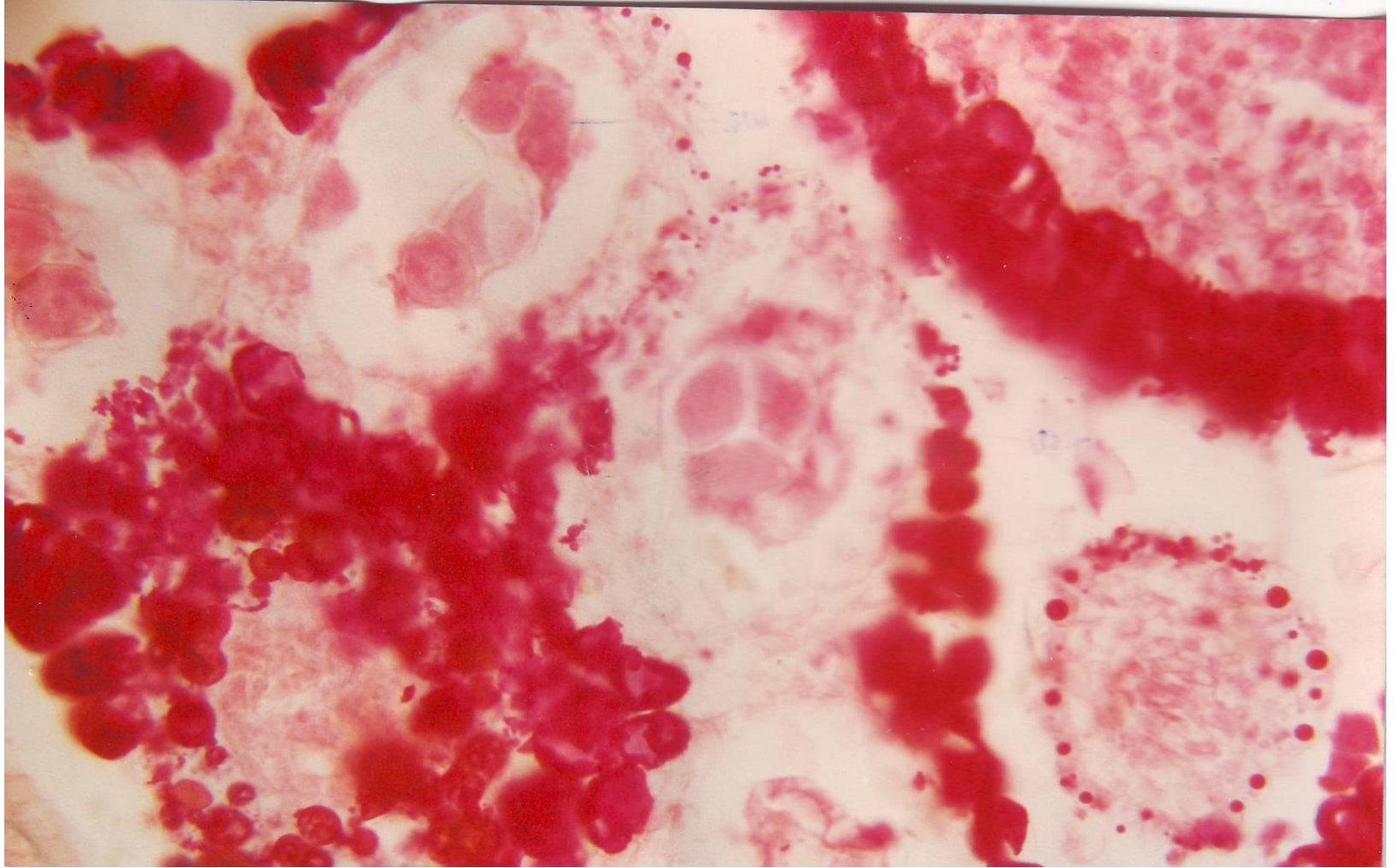


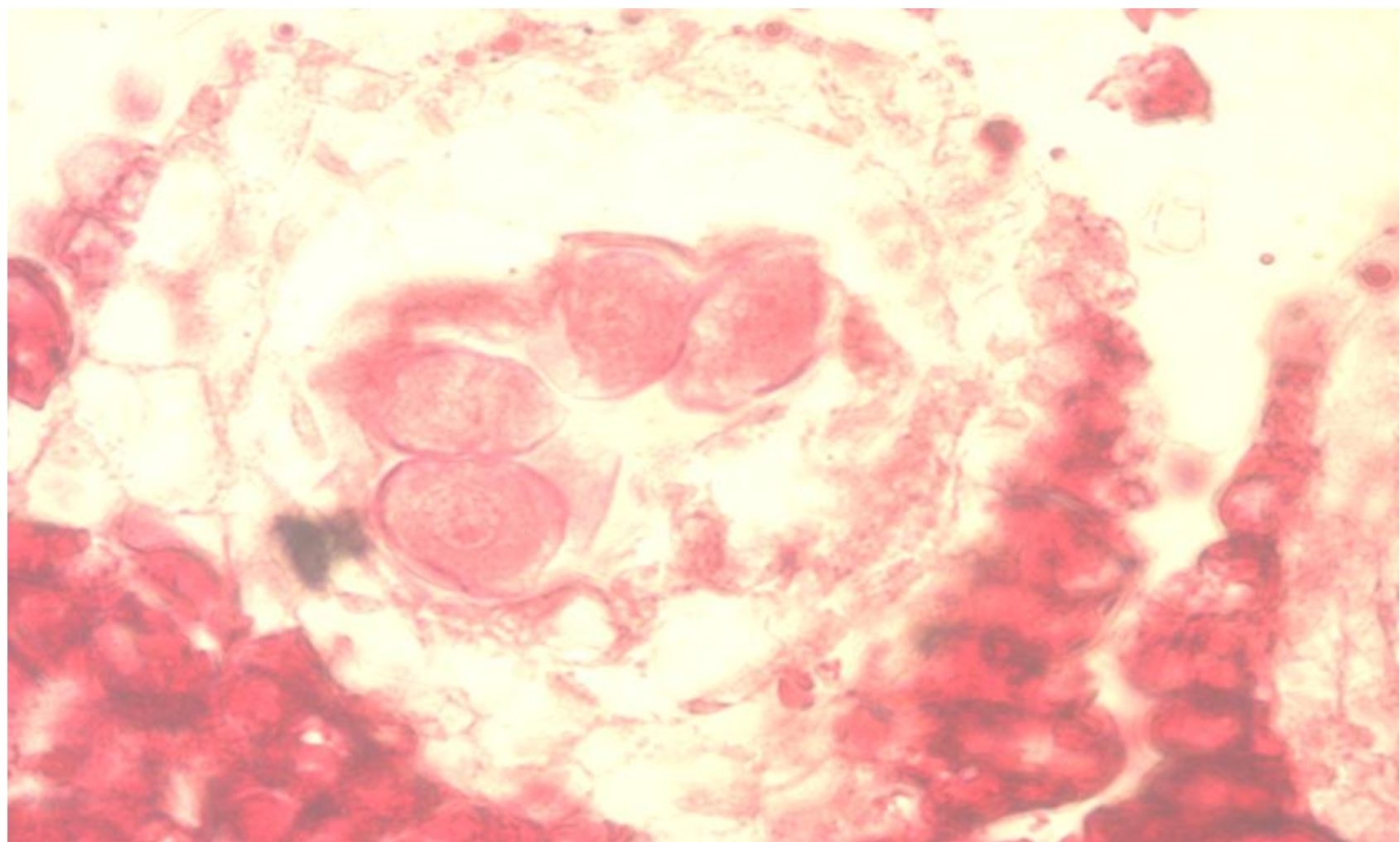


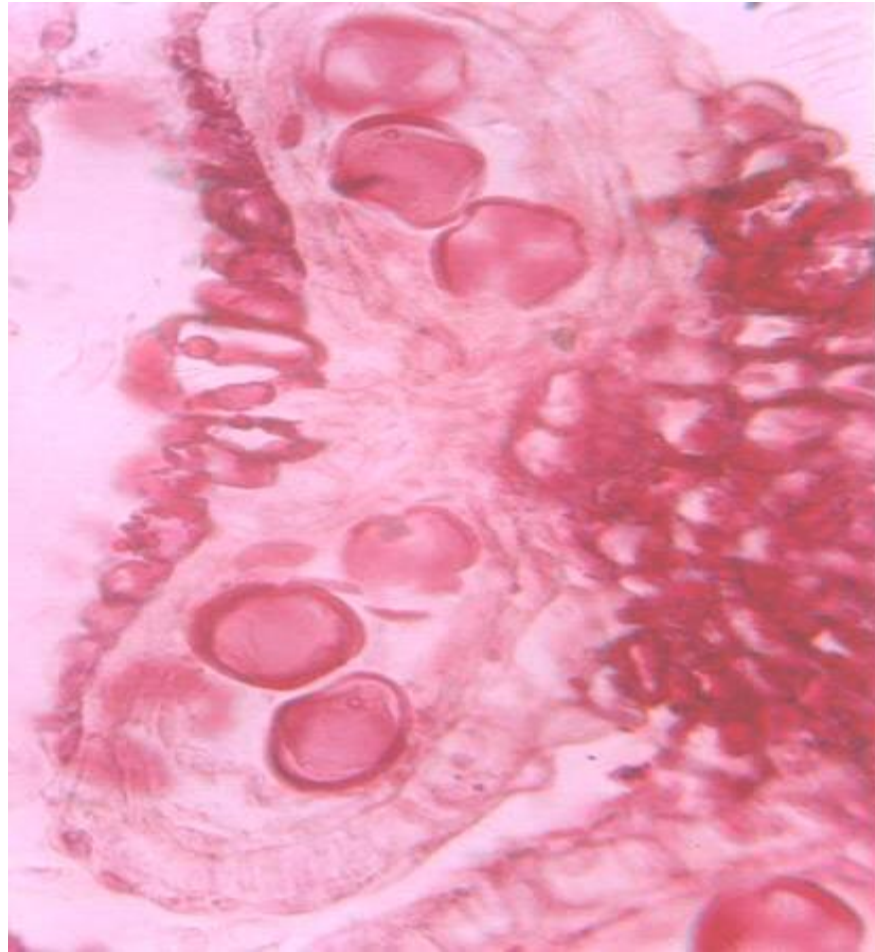


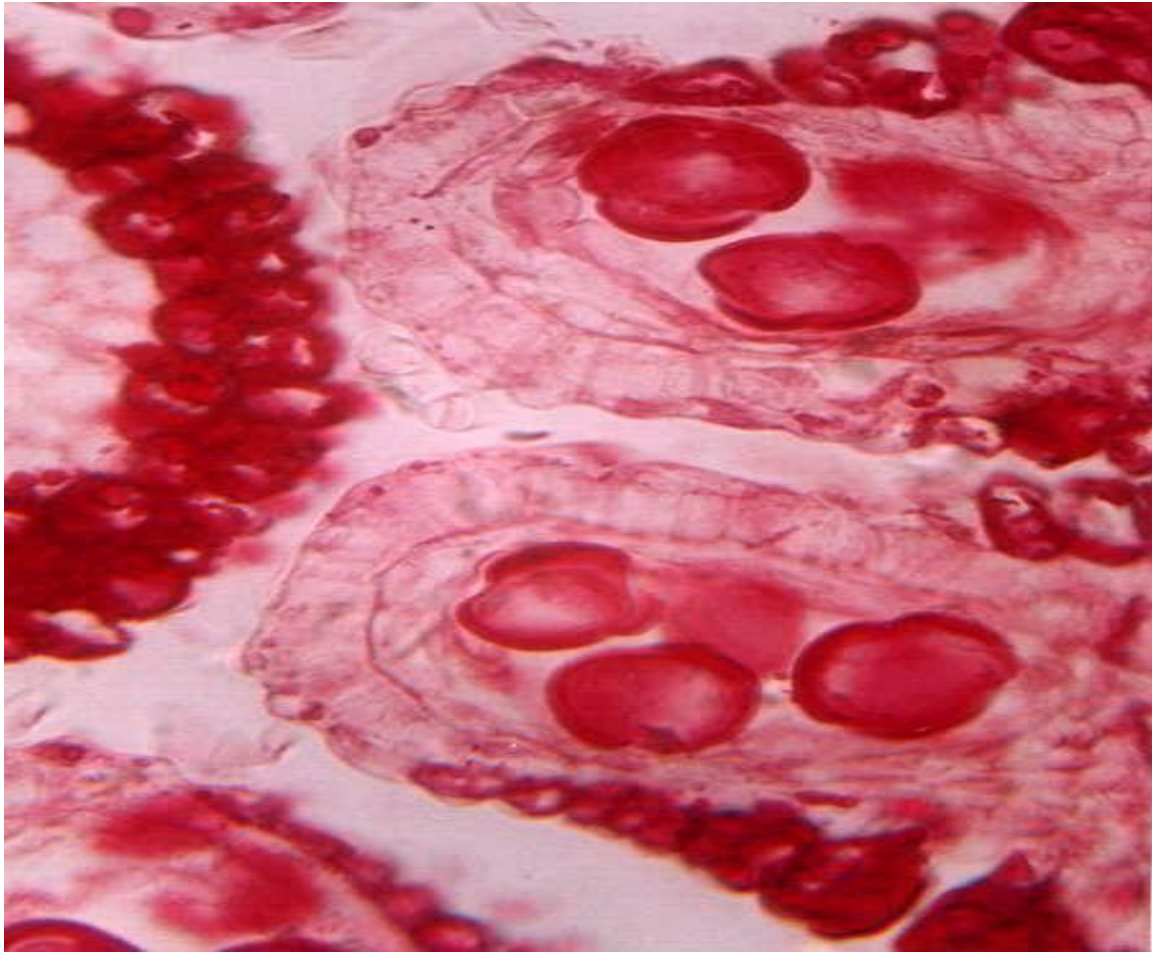


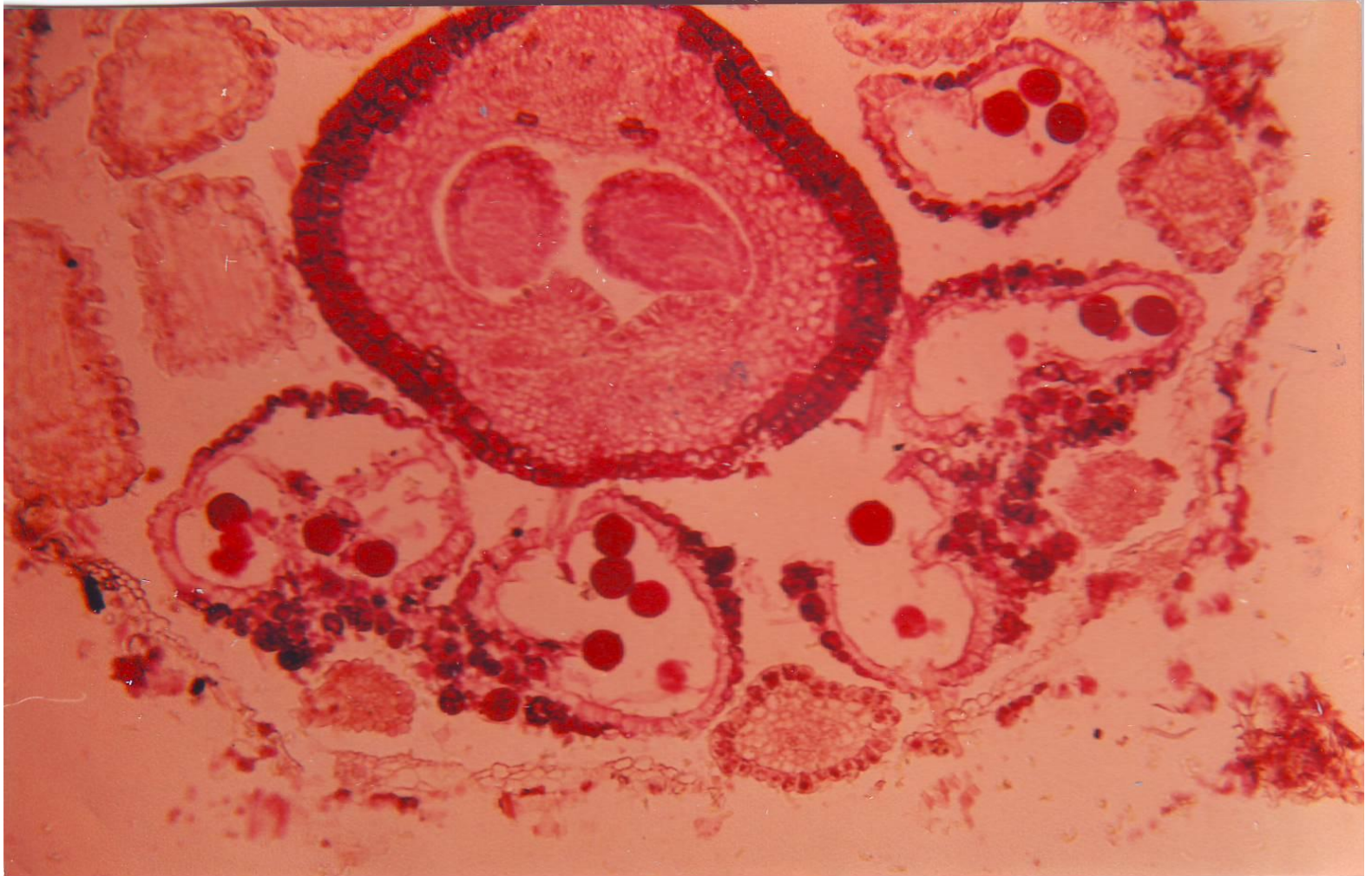


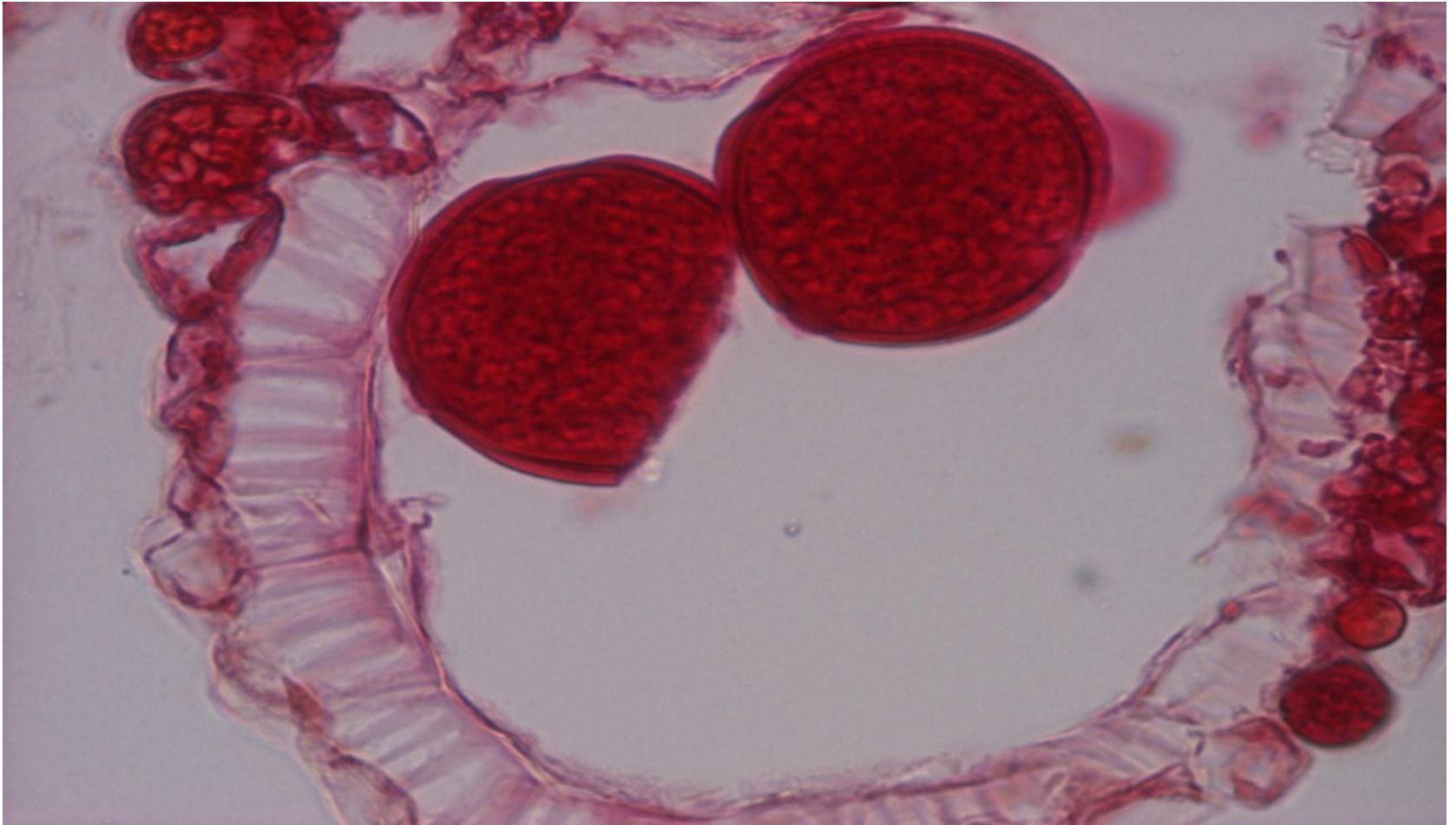




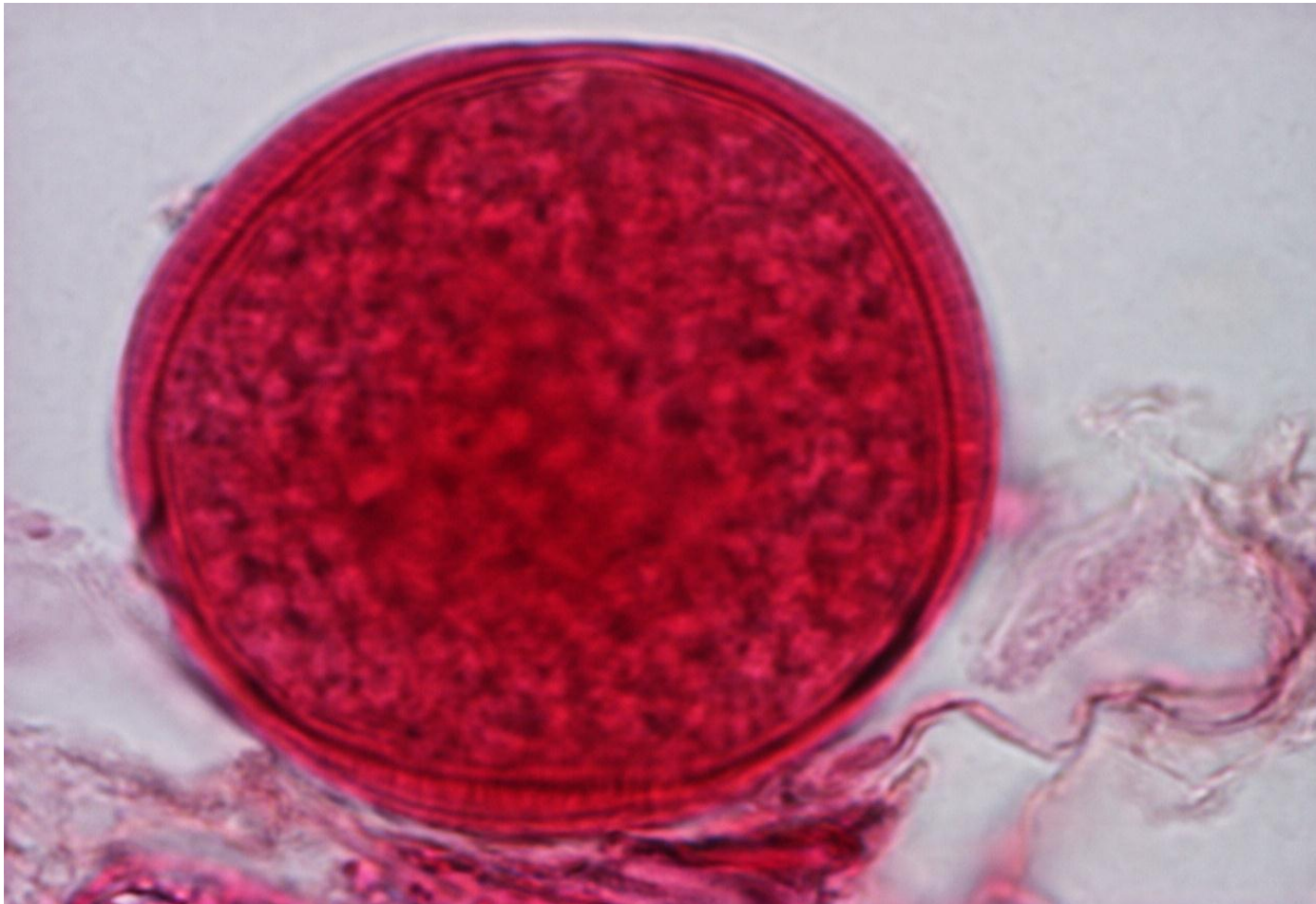






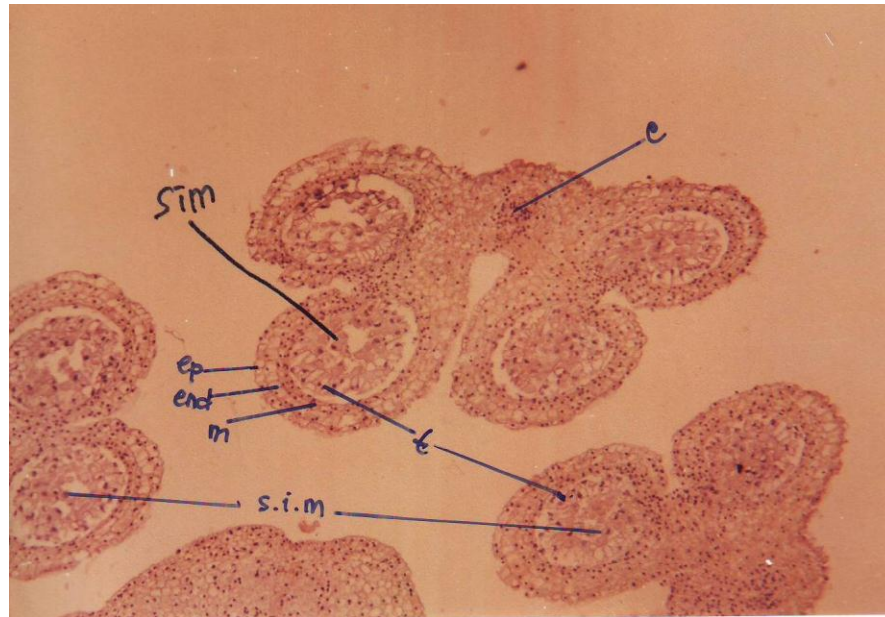


# Serbuk sari lamtoro

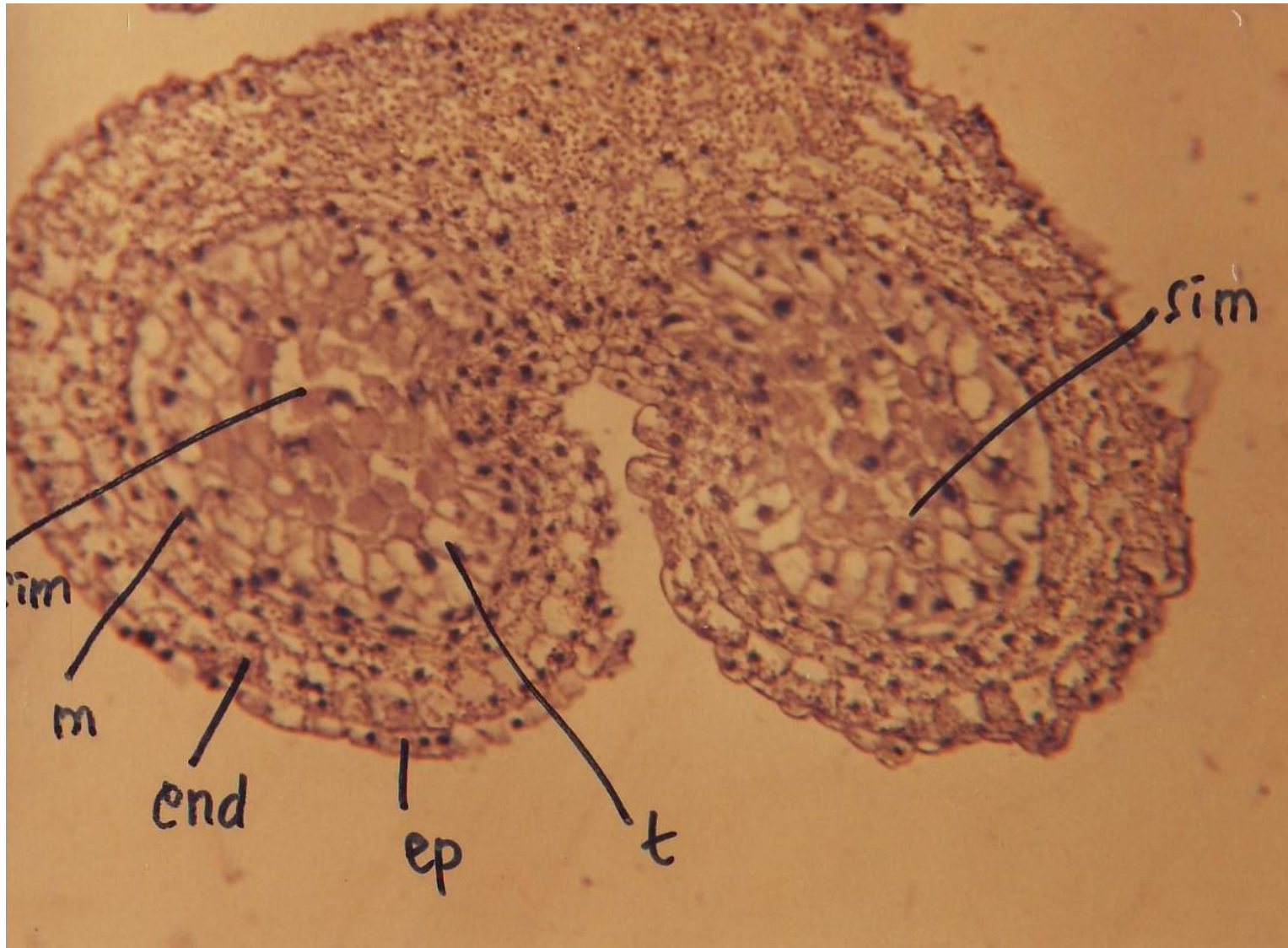




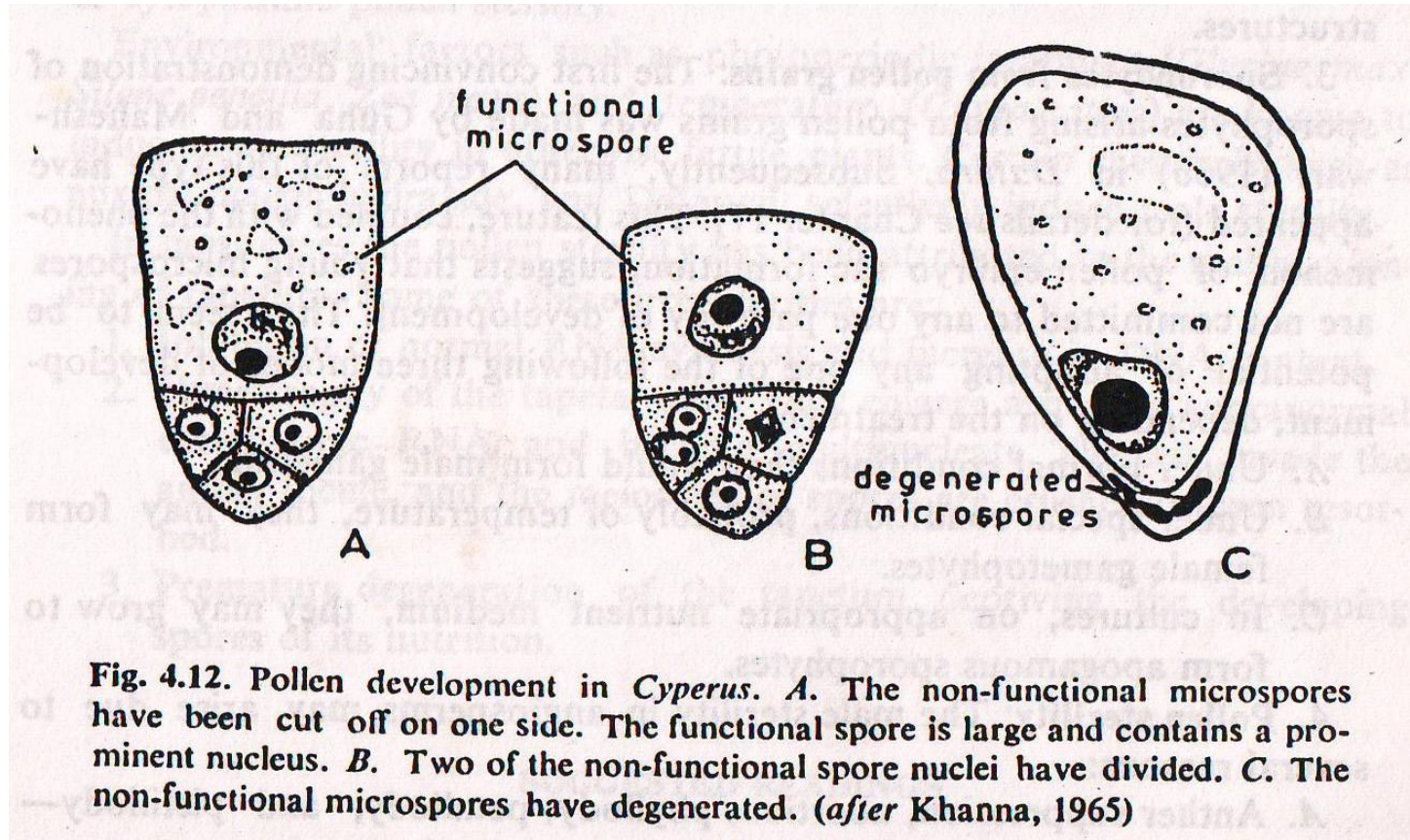
# Antera *Lilium*



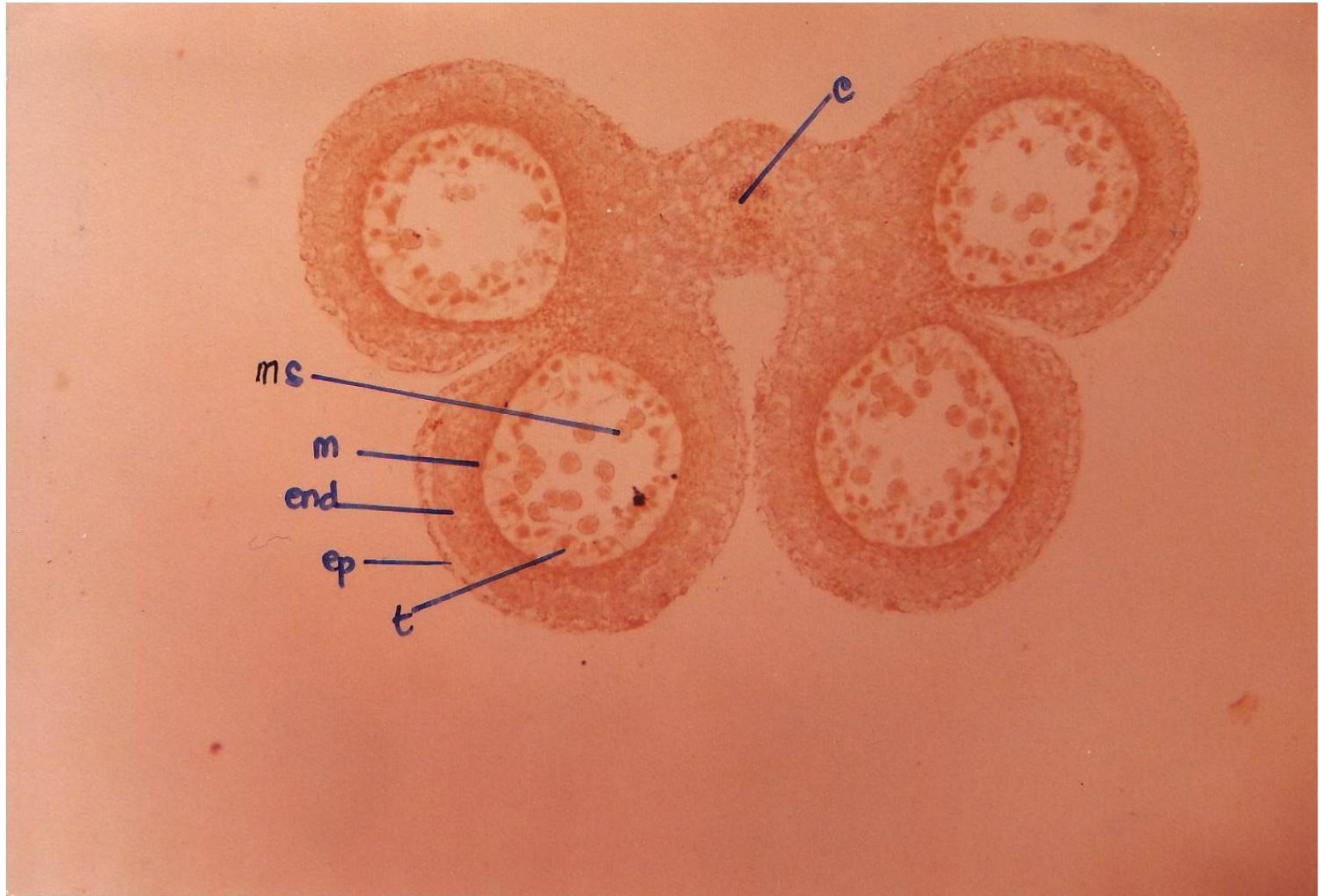
# Antera *Lilium*



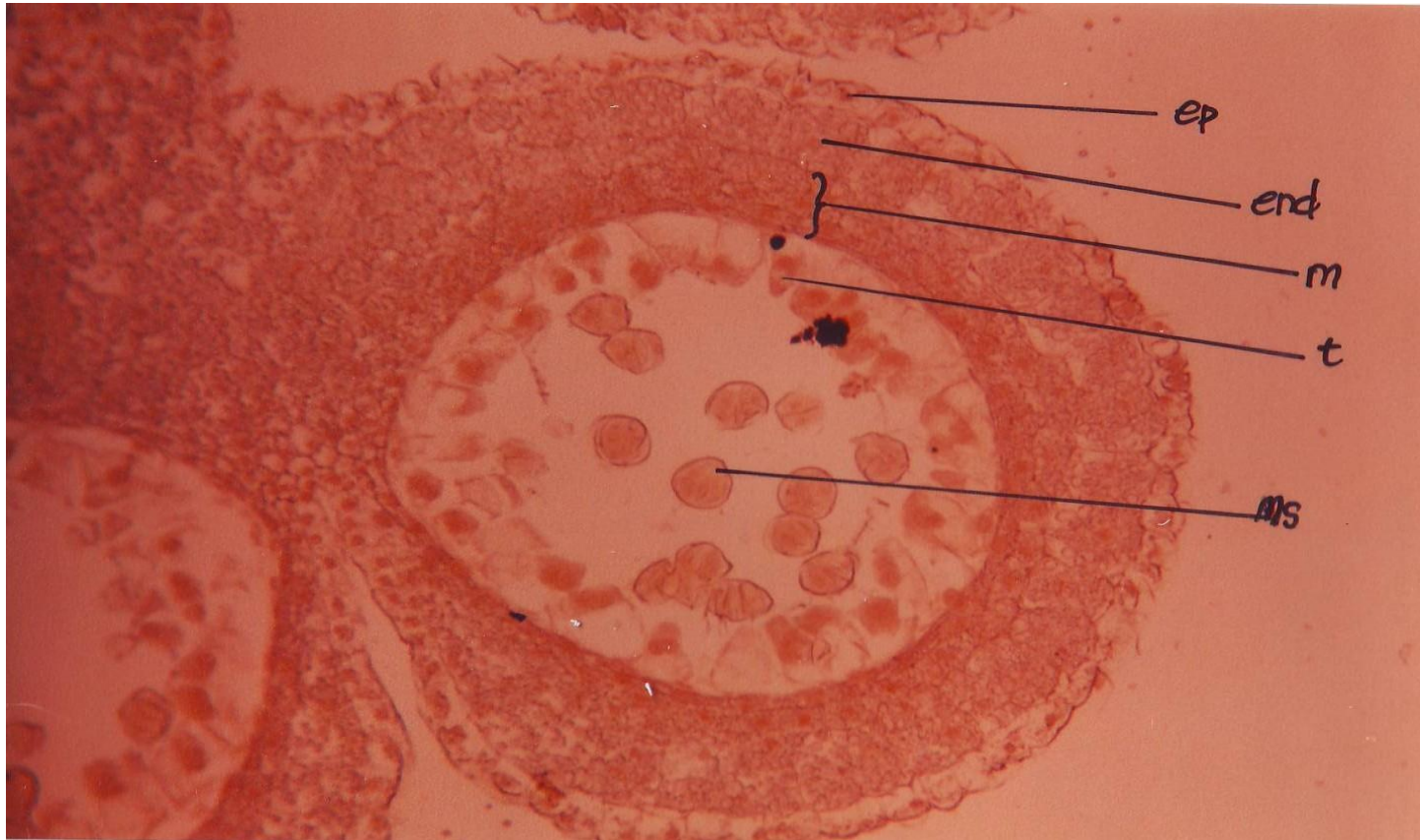
# Contoh abnormalitas perkembangan serbuk sari

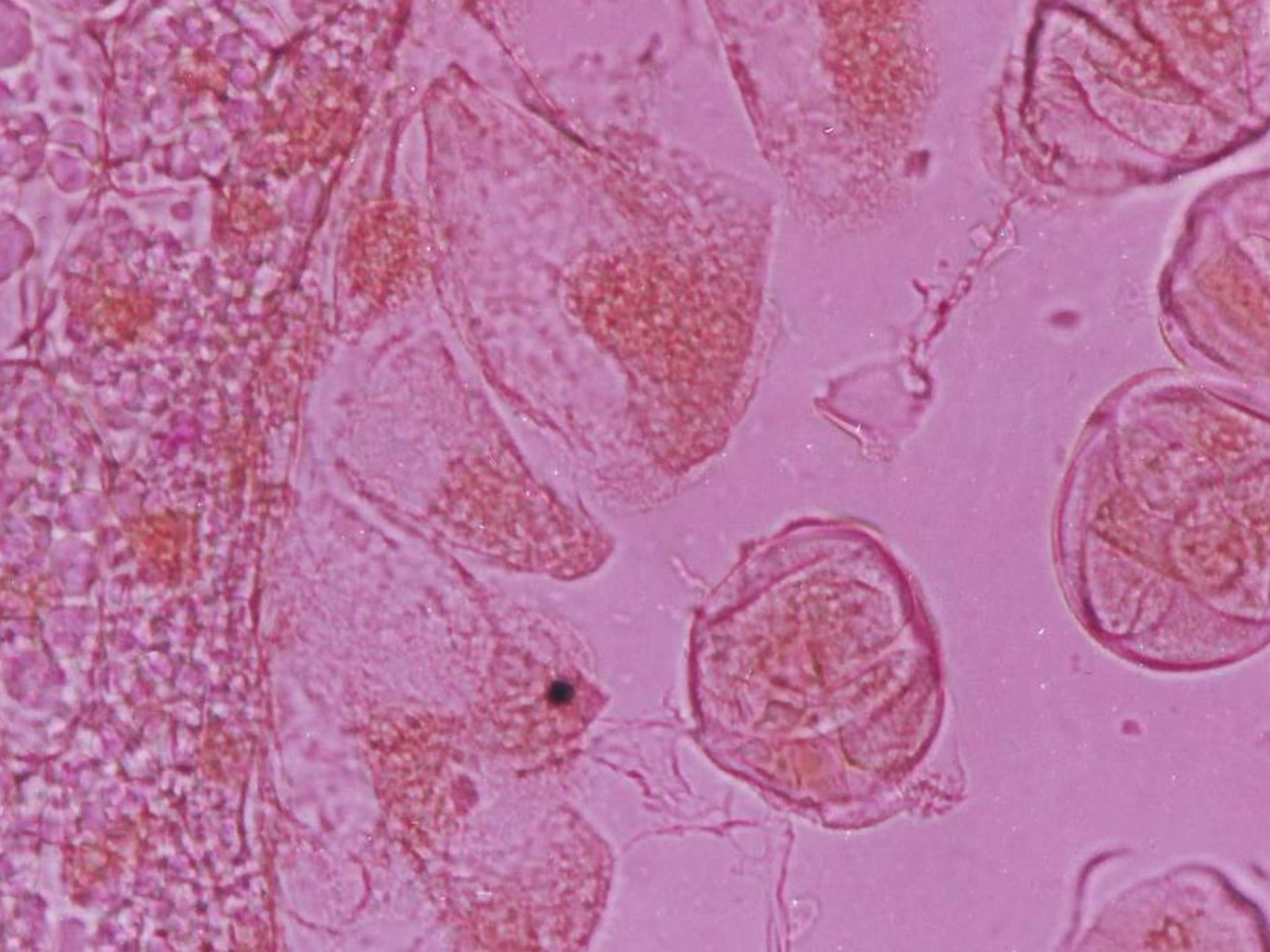


# Antera *Lilium*

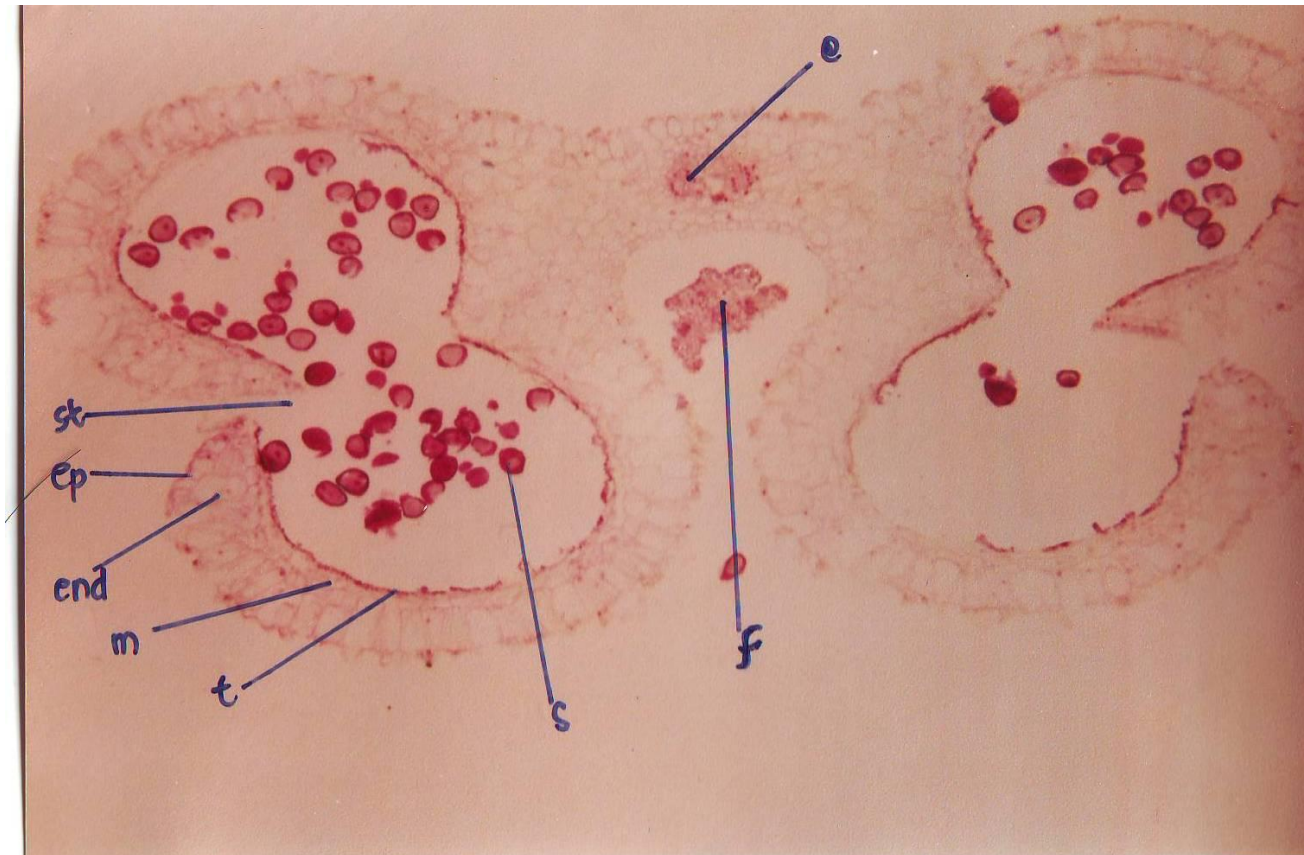


# Antera *Lilium*





# Antera masak *Lilium*



# Polen *Lilium*





# Perkembangan polen kapas

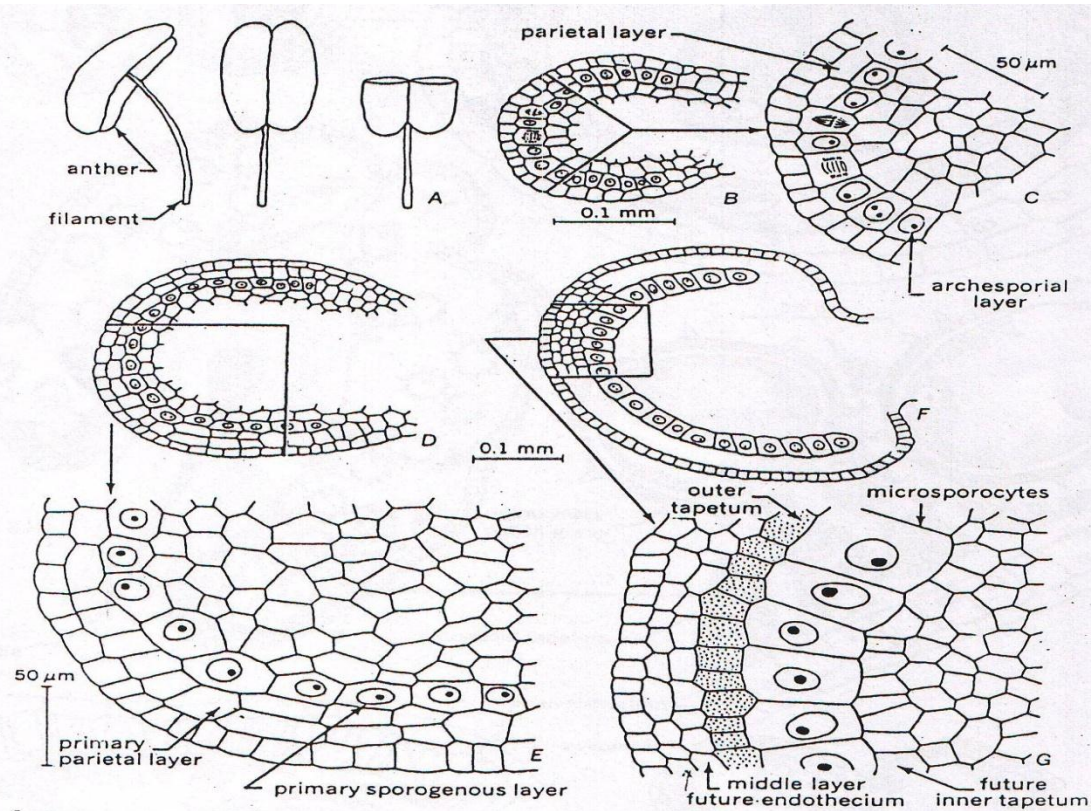


Figure 21.1 Pollen development in cotton (*Gossypium arboreum*). A, stamens showing bilobed bisporangiate structure. B–G, partial cross sections of microsporangia. B, C, archesporial stage. D, E, after formation of primary parietal layer and sporogenous layer. F, G, after formation of all wall layers and of microsporocytes. (B–G, adapted from Joshi, Wadhvani, and Johri.<sup>38</sup>)

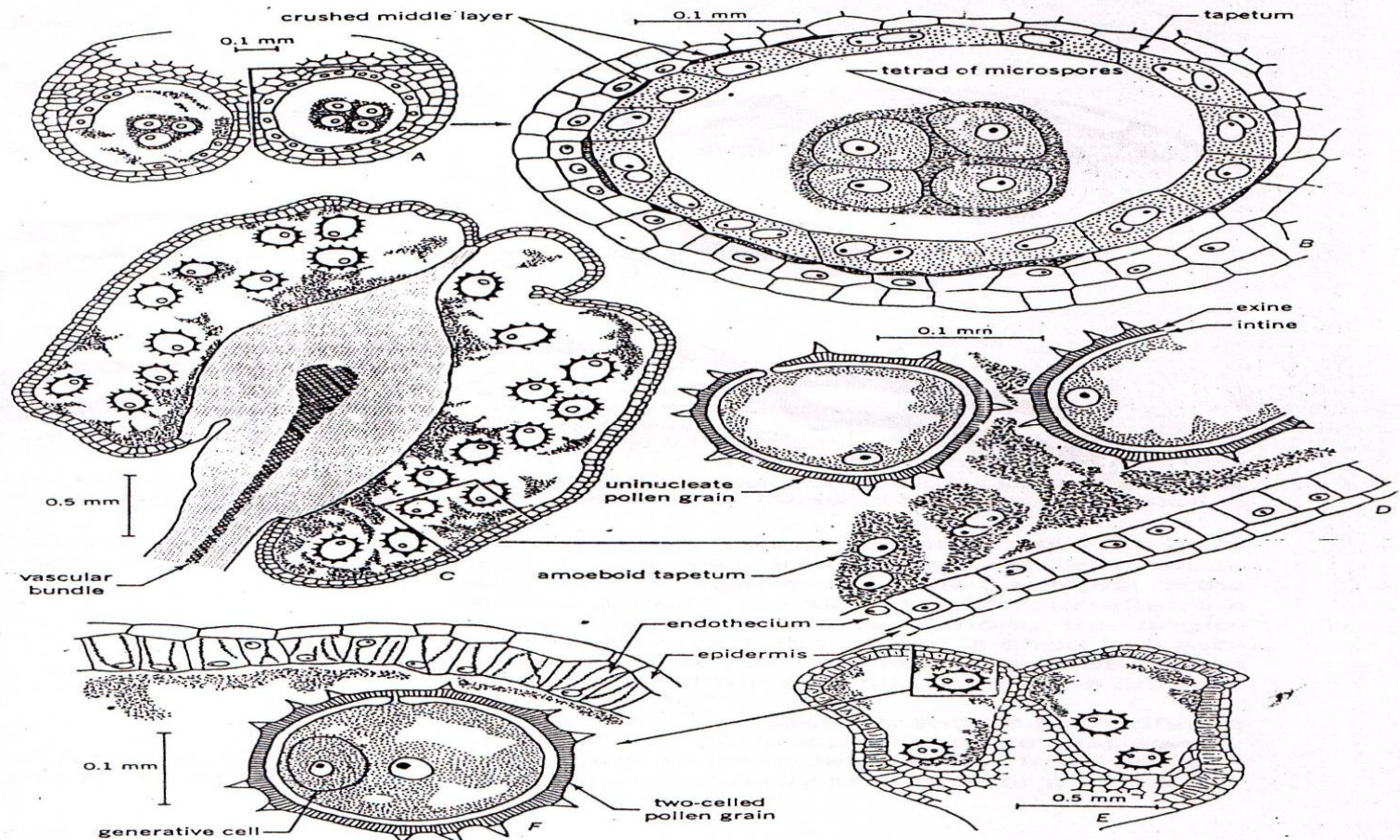
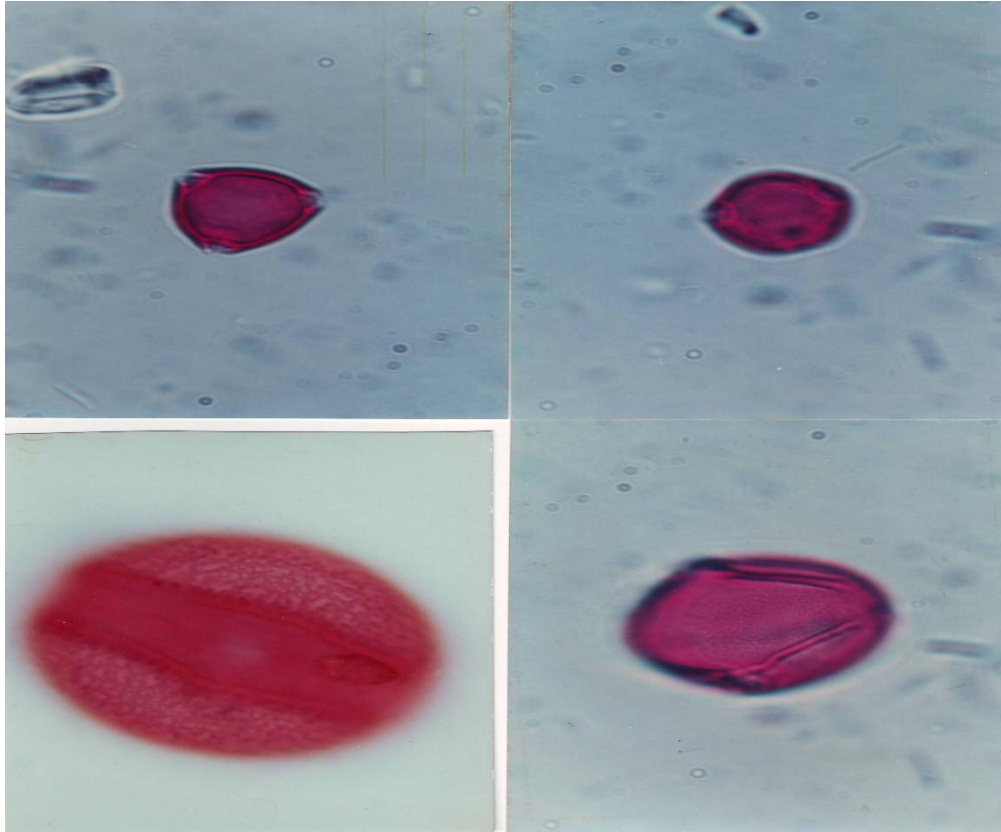


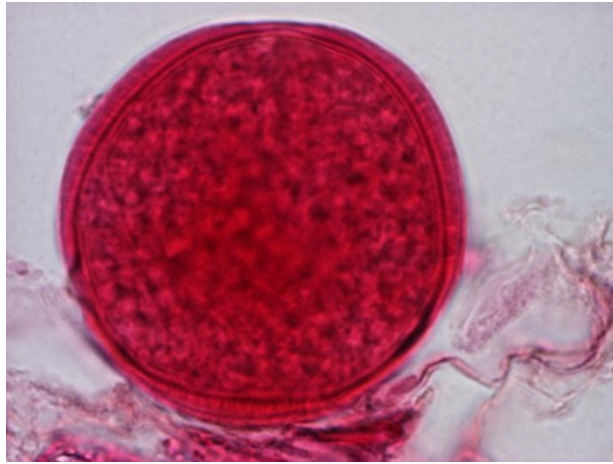
Figure 21.3 Pollen development in cotton (*Gossypium arboreum*). Partial cross (A, B) and oblique longitudinal (C–F) sections of microsporangia. A, B, tetrads in callose wall at beginning of exine formation. C, D, uninucleate pollen grains with exine and intine; tapetum in plasmodial stage. E, F, mature binucleate two-celled pollen grains; tapetum forms a periplasmodium. (Adapted from Joshi, Wadhvani, and Johri.<sup>38</sup>)



# Contoh serbuk sari monad



# Contoh serbuk sari monad



- Serbuk sari *Leucaena glauca*

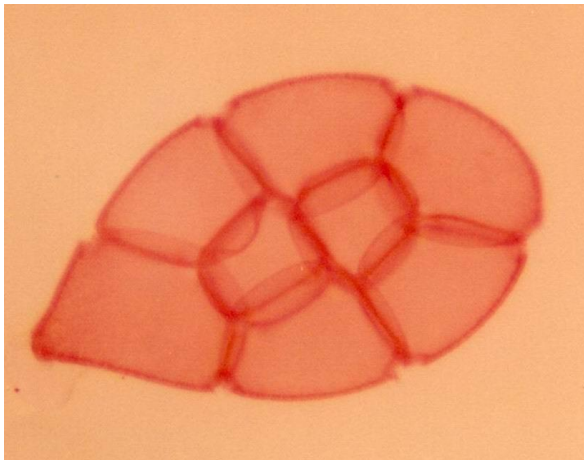


- Serbuk sari *Lilium*

# Contoh Serbuk Sari Poliad



- *Samanea saman*  
(Mimosaceae)



- *Calliandra* sp. (Mimosaceae)



Gambar 22. Kumpulan serbuk sari (masula) Acacia catechu (L.f.) Willd. bentuk prolat, perbesaran 1325 X. b.ornamentasi psilat, c.lapisan dinding,



Gambar 23. Kumpulan serbuk sari (masula) Acacia villosa Willd. bentuk subprolat, perbesaran 1325 X.